

SIRIUS

Kommunikationsmodul PROFINET für Sanftstarter 3RW44
PROFINET Communication Module for Soft Starter 3RW44
Module de communication PROFINET pour démarreur progressif 3RW44
Módulo de comunicación PROFINET para arrancador suave 3RW44
Modulo di comunicazione PROFINET per softstarter 3RW44
Módulo de comunicação PROFINET para chave de partida e parada suave 3RW44
PROFINET iletişim modülü için yumuşak yolverici 3RW44
Коммуникационный модуль PROFINET для устройства плавного пуска 3RW44
用于软起动器 3RW44 的通信模块 PROFINET



3RW4900-0NC00





EN/IEC 60947-4-2

DE	Kommunikationsmodul PROFINET für Sanftstarter 3RW44 Betriebsanleitung — Bestell-Nr.: 3ZX1012-0RW40-0NA1 Grafiken	Seite 2 - 4 23
EN	PROFINET Communication Module for Soft Starter 3RW44 Operating Instructions — Order No.: 3ZX1012-0RW40-0NA1 Graphics	Page 5 - 7 23
FR	Module de communication PROFINET pour démarreur progressif 3RW44 Instructions de service — N° de référence : 3ZX1012-0RW40-0NA1 Graphiques	Page 8 - 10 23
ES	Módulo de comunicación PROFINET para arrancador suave 3RW44 Instructivo — Referencia: 3ZX1012-0RW40-0NA1 Gráficos	Página 11 - 12 23
IT	Modulo di comunicazione PROFINET per softstarter 3RW44 Istruzioni operative — N° di ordinaz.: 3ZX1012-0RW40-0NA1 Grafiche	Pagina 13 - 14 23
PT	Módulo de comunicação PROFINET para chave de partida e parada suave 3RW44 Instruções de Operação — Código de encomenda: 3ZX1012-0RW40-0NA1 Gráficos	Página 15 - 16 23
TR	PROFINET iletişim modülü için yumuşak yolverici 3RW44 İşletme kılavuzu — Sipariş no.: 3ZX1012-0RW40-0NA1 grafikler	sayfa 17 - 18 23
PY	Коммуникационный модуль PROFINET для устройства плавного пуска 3RW44 Инструкция по эксплуатации — № для заказа: 3ZX1012-0RW40-0NA1 графики	страница 19- 20 23
中文	用于软起动器 3RW44 的通信模块 PROFINET 操作规程 - 订货号: 3ZX1012-0RW40-0NA1 图表	页码 21 - 22 23

Technical Assistance: Telephone: +49 (911) 895-5900 (8° - 17° CET) Fax: +49 (911) 895-5907 E-mail: technical-assistance@siemens.com Internet: www.siemens.com/sirius/technical-assistance	SIEMENS AG Technical Assistance Würzburger Str. 121 D-90766 Fürth	
-------------------------------------------------------------------------------------------------------------------------------------------------------------------------------------------------------------------------------------------------------------------------------------------------------------------------------------	------------------------------------------------------------------------------------------	--

 	<p>GEFAHR</p> <p>Gefährliche Spannung. Lebensgefahr oder schwere Verletzungsgefahr. Vor Beginn der Arbeiten Anlage und Gerät spannungsfrei schalten.</p>	<p>ACHTUNG</p> <p>Gefahr von Sachschäden. Der Schirm der PROFINET-Leitung muss auf das Erdungspotenzial der Anlage gebracht werden.</p>
------------------------------------------------------------------------------------------------------------------------------------------------------------------------	--------------------------------------------------------------------------------------------------------------------------------------------------------------------------------	-----------------------------------------------------------------------------------------------------------------------------------------------------------

	 www.siemens.de/sirius/manuals Weitere Informationen: Handbuch Kommunikationsmodul PROFINET Bestell-Nr. 3ZX1012-0RW40-0AB0	Handbuch Sanftstarter 3RW44 Bestell-Nr. 3ZX1012-0RW44-1AB1
-----------------------------------------------------------------------------------	-------------------------------------------------------------------------------------------------------------------------------------------------------------------------------------------------------------------------------------------------------------------------	---------------------------------------------------------------

1. Stecken des Kommunikationsmoduls PROFINET

<p>ACHTUNG</p> <p>Gefahr von Sachschäden. Vor Stecken des Kommunikationsmoduls PROFINET den Sanftstarter 3RW44 spannungsfrei schalten.</p>	<p>HINWEIS</p> <p>Das Kommunikationsmodul PROFINET funktioniert nur an 3RW44-Geräten mit Erzeugnisstand "E12" oder höher.</p>
--------------------------------------------------------------------------------------------------------------------------------------------------------------	--------------------------------------------------------------------------------------------------------------------------------------

Gehen Sie folgendermaßen vor:

1. Entfernen Sie den Deckel wie in **Bild 1** auf Seite 23 gezeigt.
2. Stecken Sie das Kommunikationsmodul PROFINET in das Gerät wie in **Bild 2** auf Seite 23 gezeigt.
3. Befestigen Sie das Kommunikationsmodul PROFINET mit den beiliegenden Schrauben.
4. Stecken Sie das PROFINET-Verbindungskabel in eine der Buchsen des Kommunikationsmoduls.

HINWEIS

Gleichzeitig können maximal zwei gerade oder ein gerader und ein gewinkelter Stecker verwendet werden.

5. Schalten Sie die Versorgungsspannung ein.
Die LED BUS blinkt gelb. Das Kommunikationsmodul ist korrekt gesteckt, aber noch nicht aktiviert.

2. Aktivierung des Kommunikationsmoduls PROFINET

Aktivieren Sie die Gerätefunktion "Feldbus"

- über das Display oder
- über die Geräteschnittstelle mit Hilfe der Software "Soft Starter ES 2007 + SP5" (oder höhere Version)

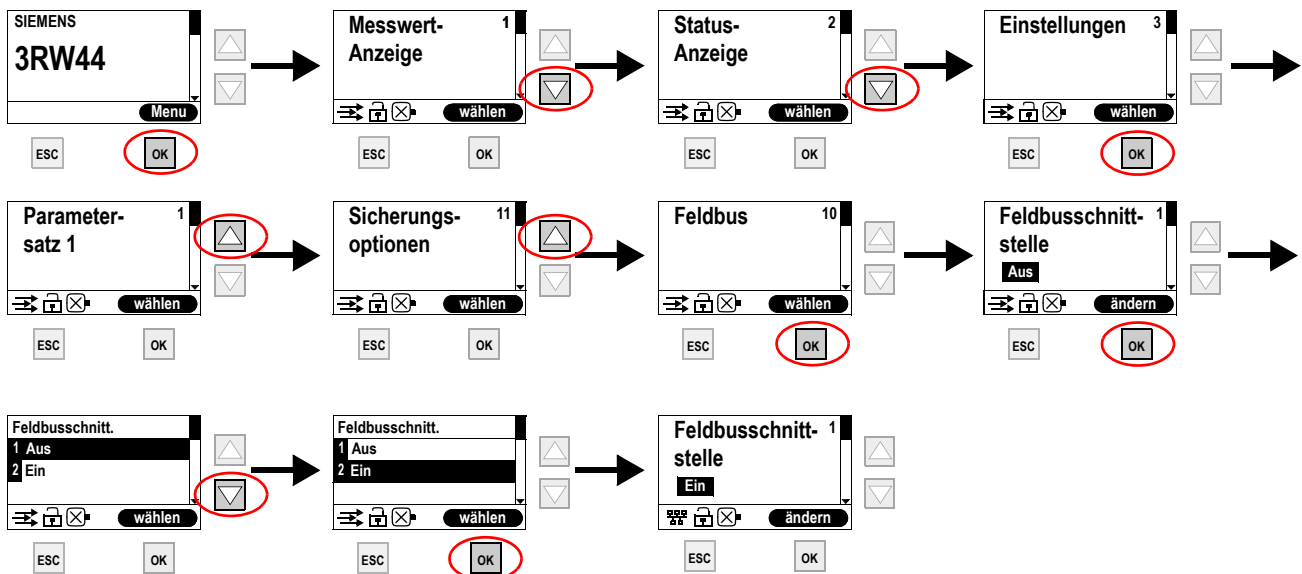
HINWEIS

Nach Aktivierung des Kommunikationsmoduls wechselt die standardmäßige Steuerhoheit automatisch von den Eingängen zum Kommunikationsmodul PROFINET.


Wenn ein Eingang mit der Funktion "Hand-Vor-Ort" aktiv ist, wechselt die Steuerhoheit nicht.

2.1 Aktivierung des Kommunikationsmoduls PROFINET über das Display

- Bei Erstinbetriebnahme müssen Sie das Schnellstartmenü durchlaufen, wie in der [Betriebsanleitung "Sanftstarter 3RW44"](#) (Bestellnummer: 3ZX1012-0RW44-0AA0) beschrieben.
- Drücken Sie am Gerät die gekennzeichnete Taste.



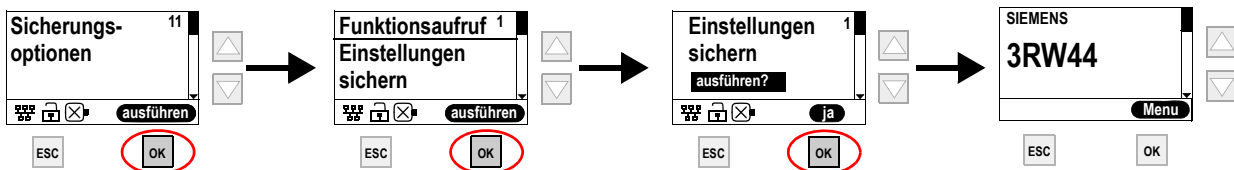
- Die LED BUS blinkt rot.

Wenn das Feldbus-Symbol  im Display erscheint, wurde das Kommunikationsmodul PROFINET erfolgreich aktiviert.

- Unter "Einstellungen > Feldbus" können Sie verschiedene Parameter einstellen. Zur Erstinbetriebnahme müssen folgende Parameter eingestellt werden: Geräte-Name, IP-Adresse, Subnetzmaske.

(siehe Handbuch "Kommunikationsmodul PROFINET", Bestell-Nr. 3ZX1012-0RW40-0AB0)

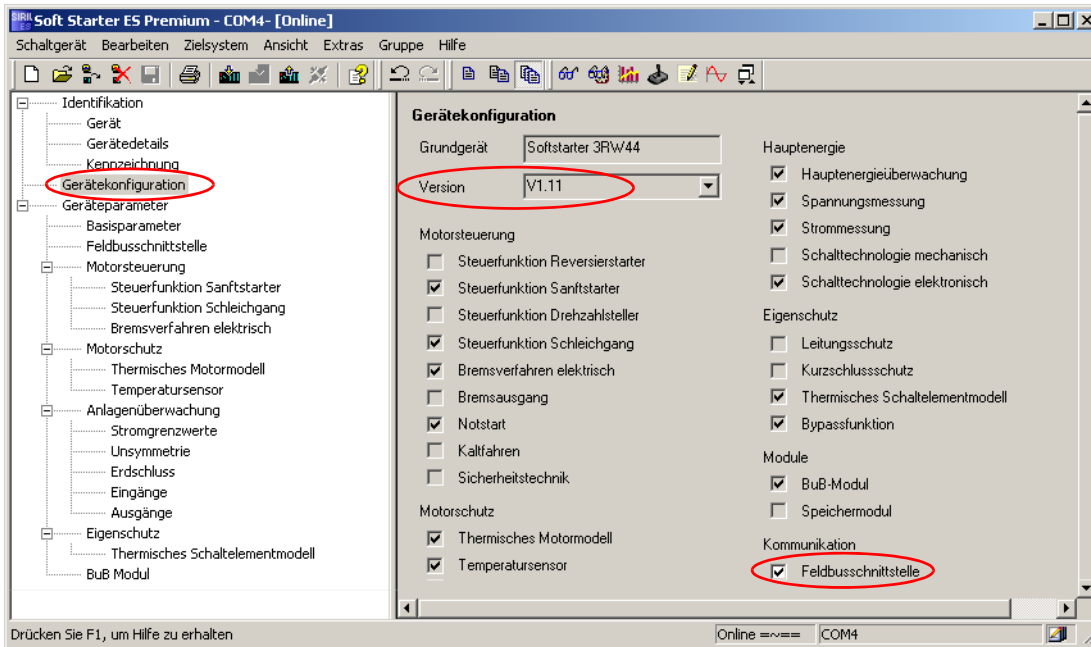
- Um die Einstellungen dauerhaft zu speichern, gehen Sie folgendermaßen vor:



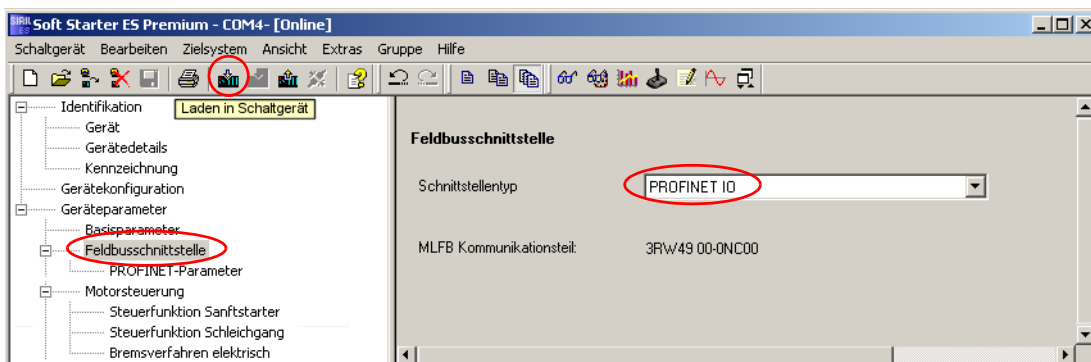
2.2 Aktivierung des Kommunikationsmoduls PROFINET über die Geräteschnittstelle mit der Software "Soft Starter ES 2007"

Um das Kommunikationsmodul zu aktivieren, führen Sie folgende Schritte durch:


1. Verbinden Sie den Sanftstarter 3RW44 über das Schnittstellenkabel (3UF7940-0AA00-0 oder 3UF7941-0AA00-0) mit einem PC, auf dem die Software "Soft Starter ES 2007 + SP5" (oder höhere Version) installiert ist.
2. Starten Sie die Software "Soft Starter ES".
3. Wählen Sie im Menü "Schaltgerät > Online Öffnen".
4. Wählen Sie im Dialogfeld "Online Öffnen" die Option "lokale Geräteschnittstelle" und unter "Schnittstelle" den gewünschten COM-Port.
5. Klicken Sie "OK".
6. Wählen Sie im linken Fensterbereich "Gerätekonfiguration".
7. Stellen Sie sicher, dass die Firmwareversion des verbundenen Sanftstarters 3RW44 Version V1.11 oder höher ist.
8. Aktivieren Sie im rechten Fensterbereich das Kontrollkästchen "Feldbusschnittstelle".





9. Wählen Sie im linken Fensterbereich "Geräteparameter > Feldbusschnittstelle".
10. Wählen Sie im rechten Fensterbereich unter Schnittstellentyp "PROFINET IO".





11. Unter "Geräteparameter > Feldbusschnittstelle > PROFINET-Parameter" können Sie die Parameter für die Kommunikation einstellen. Zur Erstinbetriebnahme müssen folgende Parameter eingestellt werden: Gerätename, IP-Adresse, Subnetzmaske. (siehe Handbuch "Kommunikationsmodul PROFINET", Bestell-Nr. 3ZX1012-0RW40-0AB0)
12. Um die geänderten Parameter zum Sanftstarter zu übertragen, wählen Sie in der Symbolleiste das Symbol "Laden in Schaltgerät" oder im Menü "Zielsystem > Laden in Schaltgerät > Alle Parameter".
13. Bestätigen Sie die Änderung der PROFINET-Parameter mit "OK".
14. Bestätigen Sie die Aktivierung des Kommunikationsmoduls PROFINET mit "OK".
15. Die LED BUS blinkt rot.

Wenn das Feldbus-Symbol  im Display erscheint, wurde das Kommunikationsmodul PROFINET erfolgreich aktiviert.

 	⚠ DANGER
	<p>Hazardous voltage. Will cause death or serious injury. Turn off and lock out all power supplying this device before working on this device.</p>

NOTICE
<p>The shield of the PROFINET cable must be brought to the grounding potential of the equipment.</p>

	
<p>Further information:</p>	<p style="text-align: center;">www.siemens.com/sirius/manuals</p>
<p>PROFINET Communication Module manual Order No. 3ZX1012-0RW40-0AB0</p>	<p>3RW44 Soft Starter manual Order No. 3ZX1012-0RW44-1AC1</p>

1. Inserting the PROFINET communication module

NOTICE
<p>Danger of material damage. Before inserting the PROFINET communication module de-energize the 3RW44 soft starter.</p>

NOTE
<p>The PROFINET communication module can only be operated on 3RW44 devices with product version "E12" or higher.</p>

Proceed as follows:

1. Remove the cover as shown in **Fig. 1** on page 23.
2. Insert the PROFINET communication module into the device as shown in **Fig. 2** on page 23.
3. Fasten the PROFINET communication module with the attached screws.
4. Insert the PROFINET connecting cable into one of the sockets of the communication module.

NOTE
<p>A maximum of two straight connectors, or one straight plus one angled connector, can be used at the same time.</p>

5. Switch on the supply voltage.
 The LED BUS flashes yellow. The communication module has been inserted correctly, but has not yet been activated.

2. Activating the PROFINET communication module

Activate the "Fieldbus" device function

- via the display or
- via the device interface using the "Soft Starter ES 2007 + SP5" software (or a higher version)

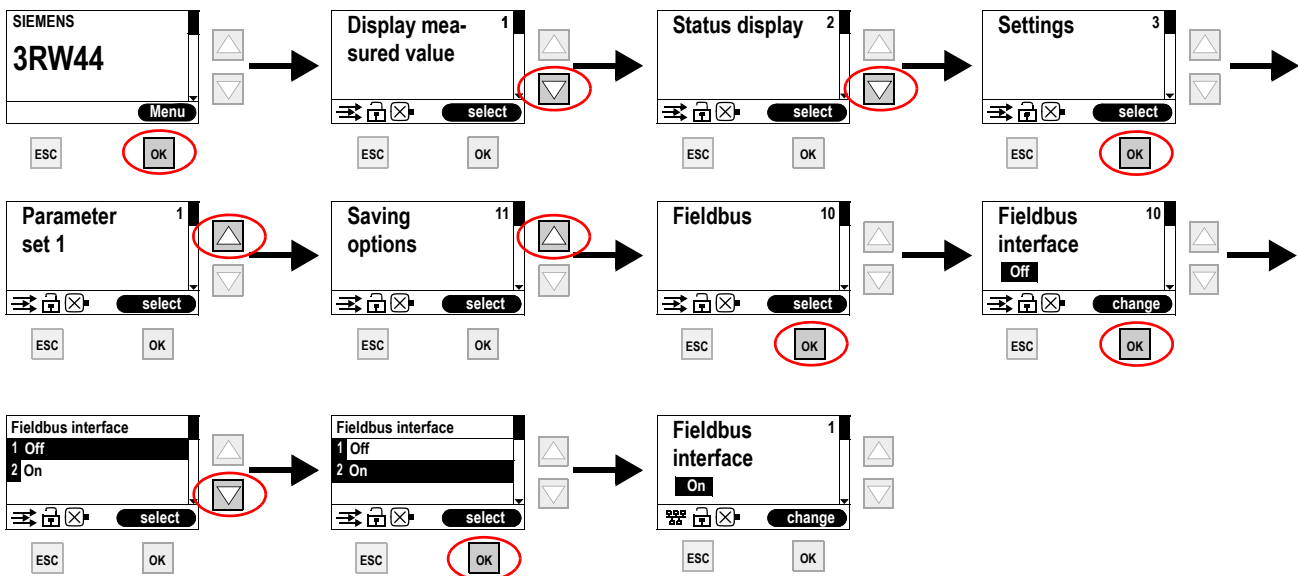
NOTICE

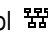
After the communication module has been activated, default control priority automatically switches from the inputs to the PROFINET communication module.

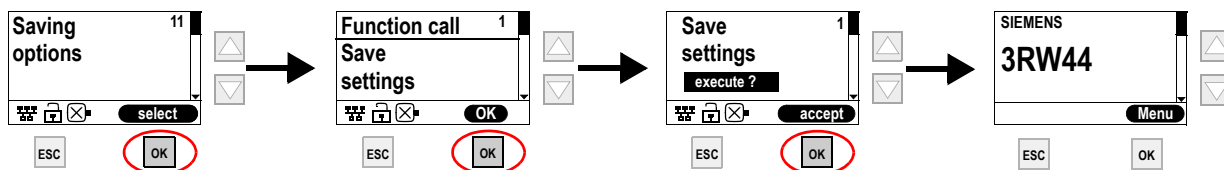
If an input with the "Manual operation local" function is active, the control priority does not change.

2.1 Activating the PROFINET communication module via the display

- Upon initial commissioning you have to run through the quick start menu as described in the ["3RW44 Soft Starter" Operating Instructions](#) (Order number: 3ZX1012-0RW44-0AA0).
- Press the designated button on the device.



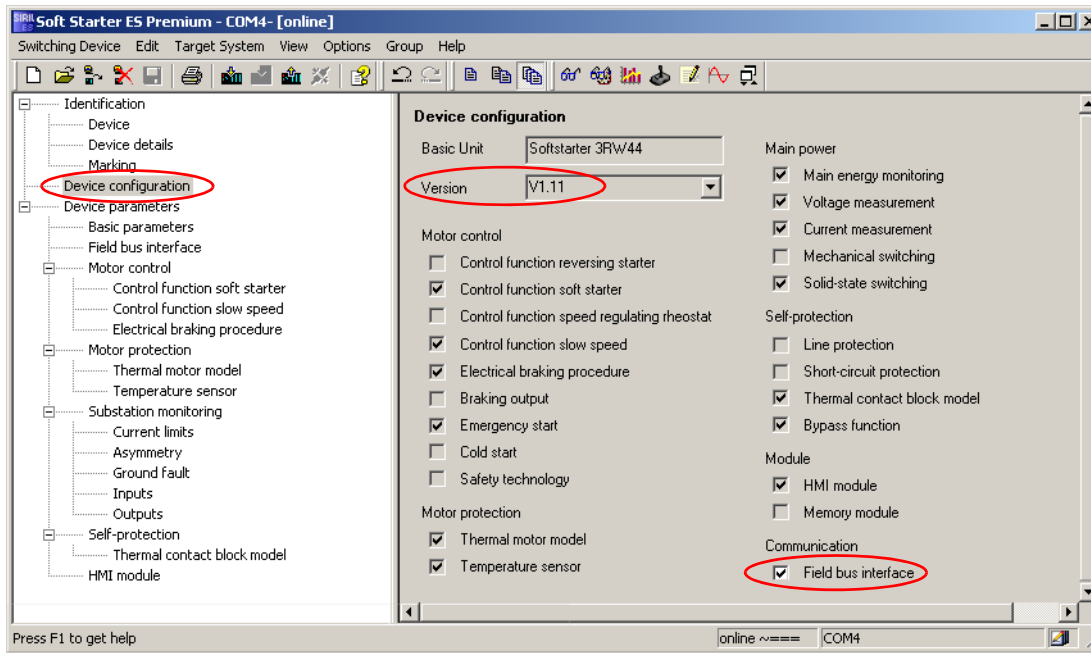
- The LED BUS flashes red.
If the fieldbus symbol  appears, the PROFINET communication module has been activated successfully.
- Under "Settings > Fieldbus" you can set various parameters. The following parameters must be set for initial commissioning: Device name, IP address, subnet mask.
(see manual "PROFINET Communication Module", Order No. 3ZX1012-0RW40-0AB0)
- In order to permanently save the settings, proceed as follows:



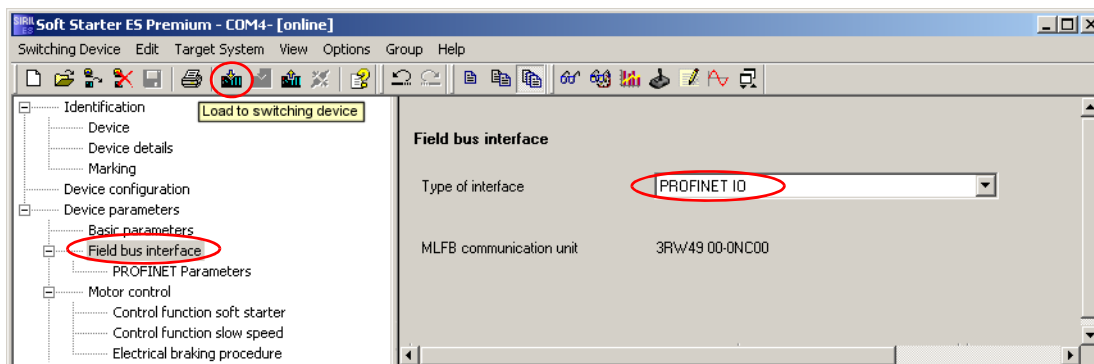
2.2 Activating the PROFINET communication module via the device interface with the "Soft Starter ES 2007" software


Perform the following steps in order to activate the communication module:



1. Connect the 3RW44 soft starter via the interface cable (3UF7940-0AA00-0 or 3UF7941-0AA00-0) with a PC on which the "Soft Starter ES 2007 + SP5" software (or higher version) is installed.
2. Start the "Soft Starter ES" software.
3. Select "Switching device > Open online" in the menu.
4. Select the option "local device interface" in the "Open online" dialog and select the desired COM port under "interface".
5. Click on "OK".
6. Select "Device configuration" in the left-hand window area.
7. Make sure that the firmware version of the connected 3RW44 soft starter is V1.11 or higher.
8. Activate the "Fieldbus interface" check box in the right-hand window area.



9. Select "Device parameters > Fieldbus interface" in the left-hand window area.
10. Select "PROFINET IO" under Interface type in the right-hand window area.



11. You can set the parameters for communication under "Device parameters > Fieldbus interface > PROFINET parameters". The following parameters must be set for initial commissioning: Device name, IP address, subnet mask. (see manual "PROFINET Communication Module", Order No. 3ZX1012-0RW40-0AB0)
12. To transfer the changed parameters to the soft starter, select the "Load to switching device" symbol in the toolbar or "Target system > Load to switching device > All parameters" in the menu.
13. Acknowledge the changed PROFINET parameters with "OK."
14. Acknowledge the activation of the PROFINET communication module with "OK":
15. The LED BUS flashes red.
If the fieldbus symbol  appears, the PROFINET communication module has been activated successfully.

 	⚠ DANGER	IMPORTANT
	Tension dangereuse. Danger de mort ou risque de blessures graves. Mettre hors tension avant d'intervenir sur l'appareil.	Le blindage du câble PROFINET doit être relié au potentiel de terre de l'installation.



Informations complémentaires :



www.siemens.com/sirius/manuals

Manuel module de communication PROFINET
 Numéro de référence 3ZX1012-0RW40-0AB0

Manuel Démarreur progressif 3RW44
 N° de référence 3ZX1012-0RW44-1AD1

1. Enfichage du module de communication PROFINET

IMPORTANT

Risque de dommages matériels.

Avant d'enficher le module de communication PROFINET, mettre le démarreur progressif 3RW44 hors tension.

REMARQUE

Le module de communication PROFINET ne fonctionne que sur des appareils 3RW44 à partir de la version de produit "E12".

Procédez comme suit :

1. Retirer le couvercle comme représenté à la **Fig. 1** page 23.
2. Enfichez le module de communication PROFINET dans l'appareil comme représenté à la **Fig. 2** page 23.
3. Fixer le module de communication PROFINET avec les vis jointes.
4. Brancher le câble de liaison PROFINET sur l'un des connecteurs femelles du module de communication.

REMARQUE

Il est possible d'utiliser au maximum deux connecteurs droits ou un connecteur droit et un connecteur coudé.

5. Appliquer la tension d'alimentation

La LED BUS clignote en jaune. Le module de communication est enfiché correctement mais n'est pas encore activé.

2. Activation du module de communication PROFINET

Activer la fonction "Bus de terrain"

- par sélection sur l'afficheur ou
- via l'interface de l'appareil à l'aide du logiciel "Soft Starter ES ES 2007 + SP5" (ou version supérieure)

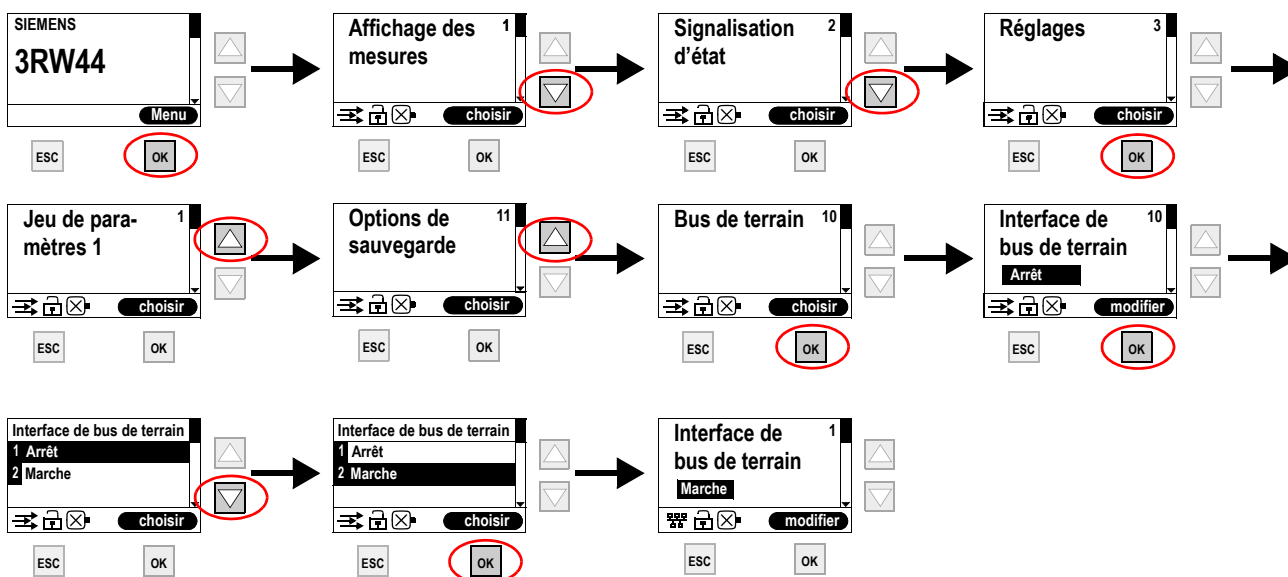
REMARQUE

Après activation du module de communication, la maîtrise de commande passe automatiquement des entrées au module de communication PROFINET.


Si une entrée est active avec la fonction "Manuel sur site", la maîtrise de commande ne change pas.

2.1 Activation du module de communication PROFINET sur l'afficheur

- A la première mise en service, il faut exécuter les commandes du menu de mise en service rapide comme présenté dans les [instructions de service "Démarreur progressif 3RW44"](#) (n° de référence : 3ZX1012-0RW44-0AA0).
- Procéder comme ci-dessous en appuyant sur les touches repérées.



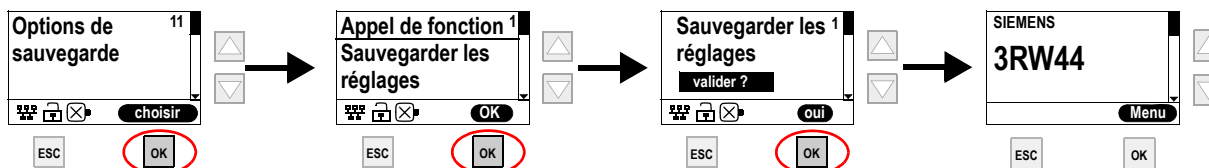
- La LED BUS clignote en rouge.

L'apparition du symbole de bus de terrain  sur l'afficheur signale que le module de communication PROFINET a été correctement activé.

- Vous pouvez régler différents paramètres sous "Réglages > Bus de terrain". A la première mise en service, les paramètres suivants doivent être réglés : nom de l'appareil, adresse IP, masque de sous-réseau.

(Voir Manuel "Module de communication PROFINET", numéro de référence 3ZX1012-0RW40-0AB0)

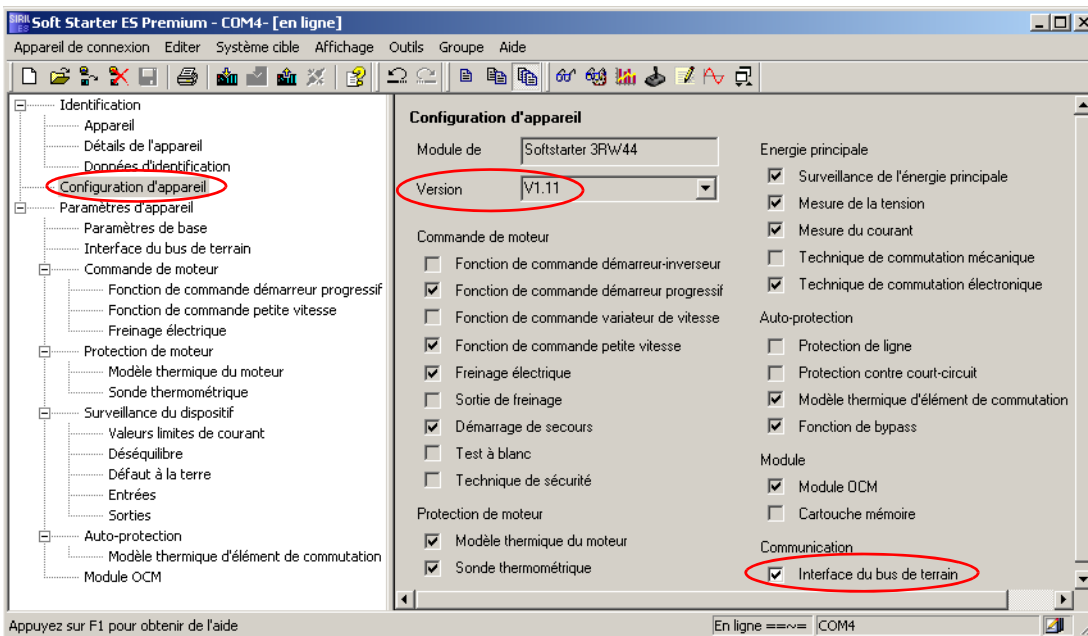
- Pour sauvegarder les paramètres, procéder comme suit :



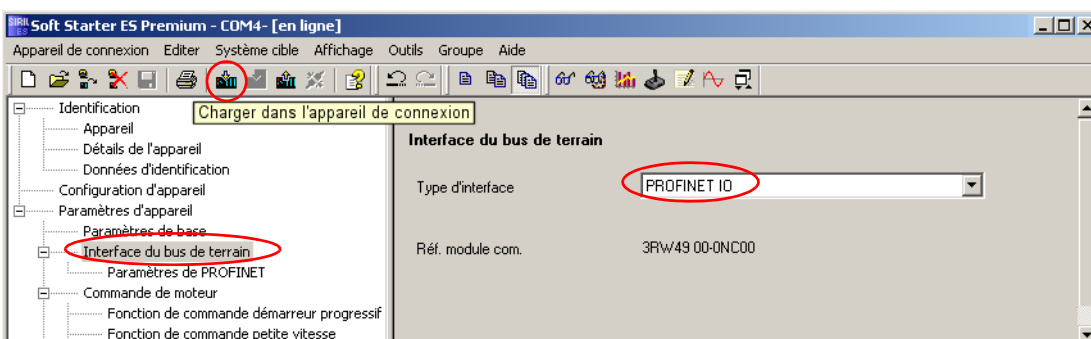
2.2 Activation du module de communication PROFINET via l'interface de l'appareil avec le logiciel "Soft Starter ES 2007"


Pour activer le module de communication, procéder comme suit :



1. Raccorder le démarreur progressif 3RW44 via le câble d'interface (3UF7940-0AA00-0 ou 3UF7941-0AA00-0) à un PC sur lequel le logiciel "Soft Starter ES 2007 + SP5" (ou version supérieure) est installé.
2. Démarrer le logiciel "Soft Starter ES".
3. Dans le menu, sélectionner "Appareil de connexion > Ouvrir en ligne".
4. Dans la fenêtre de dialogue "Ouvrir en ligne", sélectionner l'option "Interface d'appareil locale" et, sous "Interface", le port COM souhaité.
5. Cliquer sur "OK".
6. Sélectionner "Configuration de l'appareil" dans la partie gauche de la fenêtre.
7. Vérifier que la version du firmware du démarreur progressif 3RW44 raccordé est supérieure ou égale à V1.11.
8. Dans la partie droite de la fenêtre, activer la case "Interface de bus de terrain"





9. Sélectionner "Paramètres d'appareil > Interface de bus de terrain" dans la partie gauche de la fenêtre.
10. Dans la partie droite de la fenêtre, sélectionner sous type d'interface "PROFINET IO".



11. Les paramètres de communication peuvent être réglés sous "Paramètres d'appareil > Interface de bus de terrain > Paramètres PROFINET". A la première mise en service, les paramètres suivants doivent être réglés : nom de l'appareil, adresse IP, masque de sous-réseau. (Voir Manuel "Module de communication PROFINET", numéro de référence 3ZX1012-0RW40-0AB0)
12. Pour la transmission des paramètres modifiés au démarreur progressif, sélectionnez dans la barre de symboles le symbole "Charger dans l'appareil de connexion" ou dans le menu "Système cible > Charger dans l'appareil de connexion > Tous les paramètres".
13. Valider la modification des paramètres PROFINET avec "OK".
14. Valider l'activation du module de communication PROFINET avec "OK".
15. La LED BUS clignote en rouge. L'apparition du symbole de bus de terrain  sur l'afficheur signale que le module de communication PROFINET a été correctement activé.

 	<p>⚠ PELIGRO</p> <p>Tensión peligrosa. Puede causar la muerte o lesiones graves. Desconectar la alimentación eléctrica antes de trabajar en el equipo.</p>	<p>ATENCIÓN</p> <p>La pantalla del cable PROFINET debe estar unida galvánicamente con el potencial de tierra de la instalación.</p>
------------------------------------------------------------------------------------------------------------------------------------------------------------------------	---------------------------------------------------------------------------------------------------------------------------------------------------------------------------------------------------	--------------------------------------------------------------------------------------------------------------------------------------------

	 <p>www.siemens.com/sirius/manuals</p> <p>Para más información: Manual del módulo de comunicación PROFINET Referencia 3ZX1012-0RW40-0AB0</p>	<p>Manual del arrancador suave 3RW44 Referencia 3ZX1012-0RW44-1AE1</p>
-----------------------------------------------------------------------------------	------------------------------------------------------------------------------------------------------------------------------------------------------------------------------------------------------------------------------------------------------------------------------------------------	-------------------------------------------------------------------------------------

1. Enchufar el módulo de comunicación PROFINET

<p>ATENCIÓN</p> <p>Peligro de daños materiales Antes de enchufar el módulo de comunicación PROFINET debe desconectarse de la red el arrancador suave 3RW44.</p>	<p>NOTA</p> <p>El módulo de comunicación PROFINET sólo funciona asociado a arrancadores 3RW44 con versión "E12" o superior.</p>
--------------------------------------------------------------------------------------------------------------------------------------------------------------------------------------------	----------------------------------------------------------------------------------------------------------------------------------------


Forma de proceder:



1. Quite la tapa como se muestra en la **Fig. 1** de la página 23.
2. Enchufe el módulo de comunicación PROFINET en el arrancador como se muestra en la **Fig. 2** de la página 23.
3. Fije el módulo de comunicación PROFINET usando los tornillos adjuntos.
4. Enchufe el cable de conexión a PROFINET en el conector hembra del módulo de comunicación.

NOTA

Simultáneamente es posible usar como máximo dos conectores rectos o uno recto y uno acodado.

5. Conecte la tensión de alimentación.
 El LED BUS alumbra en amarillo. El módulo de comunicación está correctamente enchufado pero no está aún activado.

	PERICOLO	ATTENZIONE
	<p>Tensione pericolosa. Può provocare morte o lesioni gravi. Scollegare l'alimentazione prima di eseguire interventi sull'apparecchiatura.</p>	<p>Lo schermo del cavo PROFINET deve essere portato al potenziale di terra dell'impianto.</p>

	
<p>Ulteriori informazioni:</p>	<p>www.siemens.com/sirius/manuals</p>
<p>Manuale Modulo di comunicazione PROFINET N. di ordinazione 3ZX1012-0RW40-0AB0</p>	<p>Manuale Softstarter 3RW44 N. di ordinazione 3ZX1012-0RW44-1AF1</p>

1. Inserire il modulo di comunicazione PROFINET

ATTENZIONE	NOTA
<p>Pericolo di danni materiali. Prima di inserire il modulo di comunicazione PROFINET, scollegare il softstarter 3RW44 dalla tensione.</p>	<p>Il modulo di comunicazione PROFINET funziona solo con apparecchiature 3RW44 con versione di prodotto "E12" o superiore.</p>

Procedere come segue:

1. Rimuovere il coperchio come mostrato nella **figura 1** a pag. 23.
2. Inserire il modulo di comunicazione PROFINET nell'apparecchiatura come mostrato nella **figura 2** a pag. 23.
3. Fissare il modulo di comunicazione PROFINET con le viti in dotazione.
4. Inserire il cavo di collegamento PROFINET nella presa del modulo di comunicazione.

NOTA

Si possono utilizzare contemporaneamente al massimo due connettori dritti oppure un connettore dritto e uno angolato.

5. Attivare la tensione di alimentazione.
Il LED BUS lampeggia in giallo. Il modulo di comunicazione è stato inserito correttamente, ma non è stato ancora attivato.

2. Attivazione del modulo di comunicazione PROFINET

Attivare la funzione di apparecchiatura "Bus di campo"

- tramite il display oppure
- tramite l'interfaccia dell'apparecchiatura mediante il software "Soft Starter ES 2007 + SP5" (o versione superiore)

INFORMAZIONE IMPORTANTE

Il software "Soft Starter ES" attualmente è disponibile solo nelle lingue tedesco, inglese e francese.
Se si vuole comunque eseguire l'attivazione del modulo di comunicazione PROFINET impiegando il software, seguire le istruzioni in inglese a pag. 7.

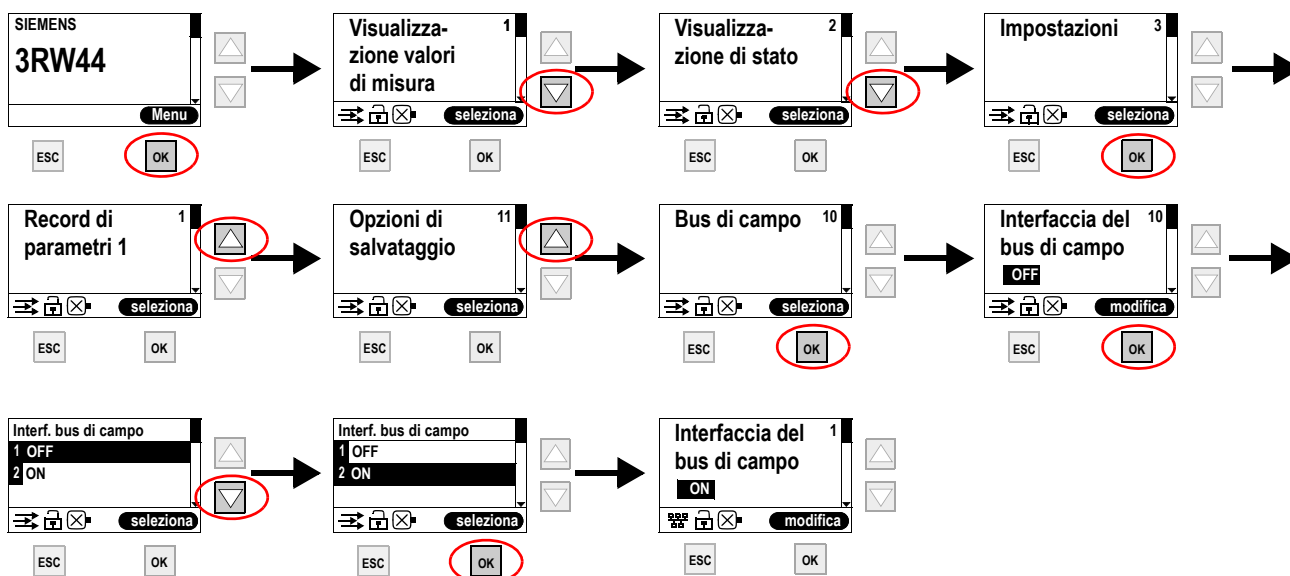
NOTA

Dopo l'attivazione del modulo di comunicazione la priorità di comando commuta automaticamente per default dagli ingressi al modulo di comunicazione PROFINET.

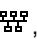
Se un ingresso è attivo con la funzione "Comando manuale locale", la priorità di comando non cambia.

2.1 Attivazione del modulo di comunicazione PROFINET tramite display

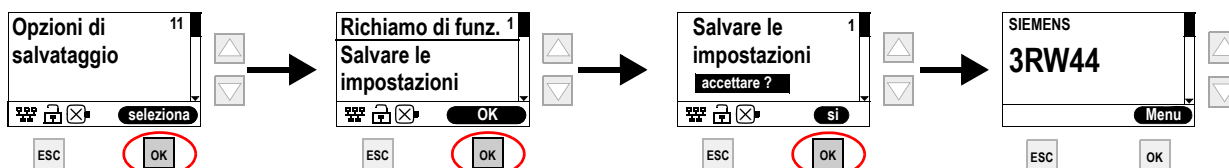
- Alla prima messa in servizio si deve eseguire il menu di start rapido, come descritto nelle [Istruzioni operative "Softstarter 3RW44"](#) (N. di ordinazione: 3ZX1012-0RW44-0AA0).
- Premere sull'apparecchiatura il pulsante contrassegnato.







- Il LED BUS lampeggia in rosso.

Se nel display appare il simbolo del bus di campo , l'attivazione del modulo di comunicazione PROFINET è stata eseguita correttamente.

- Sotto "Impostazioni > Bus di campo" si possono impostare diversi parametri. Per la prima messa in servizio si devono impostare i seguenti parametri: nome apparecchiatura, indirizzo IP, maschera di sottorete.
(vedi il manuale "Modulo di comunicazione PROFINET", n. di ordinazione 3ZX1012-0RW40-0AB0)
- Per memorizzare le impostazioni in modo permanente, procedere come segue:



 	<p>PERIGO</p> <p>Tensão perigosa. Perigo de morte ou ferimentos graves. Desligue a corrente antes de trabalhar no equipamento.</p>	<p>ATENÇÃO</p> <p>A blindagem do condutor PROFINET deverá ser conectada ao potencial de terra da instalação.</p>
------------------------------------------------------------------------------------------------------------------------------------------------------------------------	---------------------------------------------------------------------------------------------------------------------------------------------------------------------------	-------------------------------------------------------------------------------------------------------------------------

 <p>Mais informações:</p>	 <p>www.siemens.com/sirius/manuals</p> <p>Manual do módulo de comunicação PROFINET Referência 3ZX1012-0RW40-0AB0</p>	<p>Manual da chave de partida e parada suave 3RW44 Referência 3ZX1012-0RW44-1AG1</p>
------------------------------------------------------------------------------------------------------------	------------------------------------------------------------------------------------------------------------------------------------------------------------------------------------------------------------------------------------------------------------------------	---------------------------------------------------------------------------------------------------

1. Encaixe do módulo de comunicação PROFINET

<p>ATENÇÃO</p> <p>Perigo de danos materiais. Antes de encaixar o módulo de comunicação PROFINET, desligue a chave de partida e parada suave 3RW44 da tensão.</p>	<p>INDICAÇÃO</p> <p>O módulo de comunicação PROFINET funciona apenas em aparelhos 3RW44 com estado de fabrico "E12" ou superior.</p>
---------------------------------------------------------------------------------------------------------------------------------------------------------------------------------------------	---------------------------------------------------------------------------------------------------------------------------------------------

Proceda da seguinte forma:

1. Retira a tampa como ilustrado na **Figura 1** na página 23.
2. Encaixe o módulo de comunicação PROFINET no aparelho como ilustrado na **Figura 2** na página 23.
3. Fixe o módulo de comunicação PROFINET com os parafusos fornecidos juntos.
4. Encaixe o cabo de ligação PROFINET em uma das fichas fêmeas do módulo de comunicação.

INDICAÇÃO

Podem ser utilizados em simultâneo dois conectores retos ou um conector reto e um angulado, no máximo.

5. Ligue a tensão de alimentação.
 O LED BUS pisca a amarelo. O módulo de comunicação foi inserido corretamente mas ainda não foi ativado.

2. Ativação do módulo de comunicação PROFINET

Ative a função do aparelho "Bus de campo"

- na tela ou
- através da interface do aparelho com a ajuda do software "Soft Starter ES 2007 + SP5" (ou uma versão superior)

INDICAÇÃO IMPORTANTE:

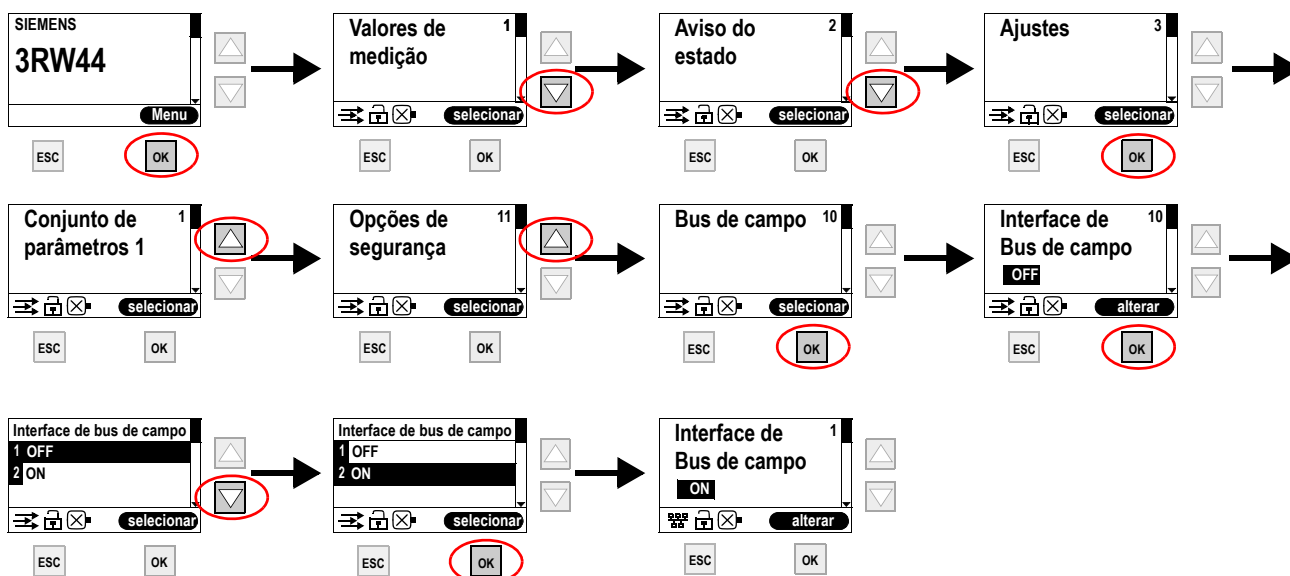
Atualmente, o software "Soft Starter ES" só está disponível em alemão, inglês e francês.
Se, mesmo assim, pretender continuar com a ativação do módulo de comunicação PROFINET através do software, siga as instruções em inglês na pág. 7.

INDICAÇÃO

Após a ativação do módulo de comunicação, o poder de comando convencional é automaticamente transferido das entradas para o módulo de comunicação PROFINET.
Se uma entrada estiver ativa com a função "Manual no local", o poder do comando não é transferido.

2.1 Ativação do módulo de comunicação PROFINET na tela

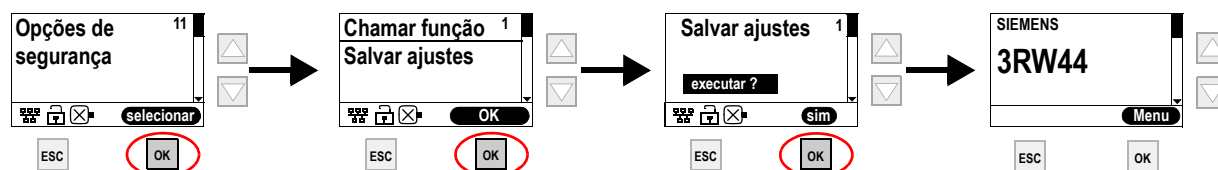
- Quando da primeira colocação em serviço, terá de percorrer o menu de partida rápida, tal como descrito no [manual do utilizador "Chave de partida e parada suave 3RW44"](#) (referência: 3ZX1012-0RW44-0AA0).
- No aparelho, prima a tecla assinalada.






- O LED BUS pisca a vermelho.

Se o símbolo do bus de campo for exibido na tela, significa que o módulo de comunicação PROFINET foi ativado com sucesso.

- Em "Ajustes > Bus de campo" pode ajustar os diversos parâmetros. Para a primeira colocação em serviço é necessário ajustar os seguintes parâmetros: nome do aparelho, endereço IP, máscara de sub-rede. (ver manual "Módulo de comunicação PROFINET", referência 3ZX1012-0RW40-0AB0)
- Para salvar os ajustes de modo permanente, proceda da seguinte maneira:



	⚠ TEHLİKE	DİKKAT
	<p>Tehlikeli gerilim. Ölüm tehlikesi veya ağır yaralanma tehlikesi. Çalışmalara başlamadan önce, sistemin ve cihazın gerilim beslemesini kapatınız.</p>	<p>PROFINET hattının izolasyonu sistemin toprak hattı potansiyeli seviyesine alınmalıdır.</p>

		<p>www.siemens.com/sirius/manuals</p>
<p>Diğer bilgiler:</p>	<p>PROFINET iletişim modülü el kitabı Sipariş No. 3ZX1012-0RW40-0AB0</p>	<p>3RW44 yumuşak yolverici el kitabı Sipariş No. 3ZX1012-0RW44-1AH1</p>

1. PROFINET iletişim modülünün takılması

DİKKAT	NOT
<p>Maddi hasar tehlikesi. PROFINET iletişim modülü takılmadan önce, yumuşak yolverici 3RW44 gerilimsiz hale getirilmelidir.</p>	<p>PROFINET iletişim modülü ancak üretim konumu "E12" veya daha yeni olan 3RW44 cihazlarında çalışır.</p>

İzlenecek prosedür:

1. Kapağı Sayfa 23'de **Resim 1**'de gösterildiği gibi çıkartınız.
2. PROFINET iletişim modülünü 23'de **Resim 2**'de gösterildiği gibi cihazın içine takınız.
3. PROFINET iletişim modülünü ekteki cıvatalar ile sabitleyiniz.
4. PROFINET bağlantı kablosunu iletişim modülünün soketine/prizine takınız.

NOT

Aynı anda en çok iki düz veya bir düz ve bir açılı fiş kullanılabilir.

5. Besleme gerilimini açınız.
Sarı LED BUS ışığı yanıp söner. İletişim modülü doğru takılmıştır, fakat henüz aktifleştirilmemiştir.

2. PROFINET iletişim modülünün aktifleştirilmesi

Alan busu" cihaz fonksiyonunu aktifleştiriniz

- Ekran üzerinden veya
- "Soft Starter ES 2007 + SP5" (veya daha yeni sürümü) yazılımı yardımıyla cihaz arabirimi üzerinden

ÖNEMLİ BİLGİ

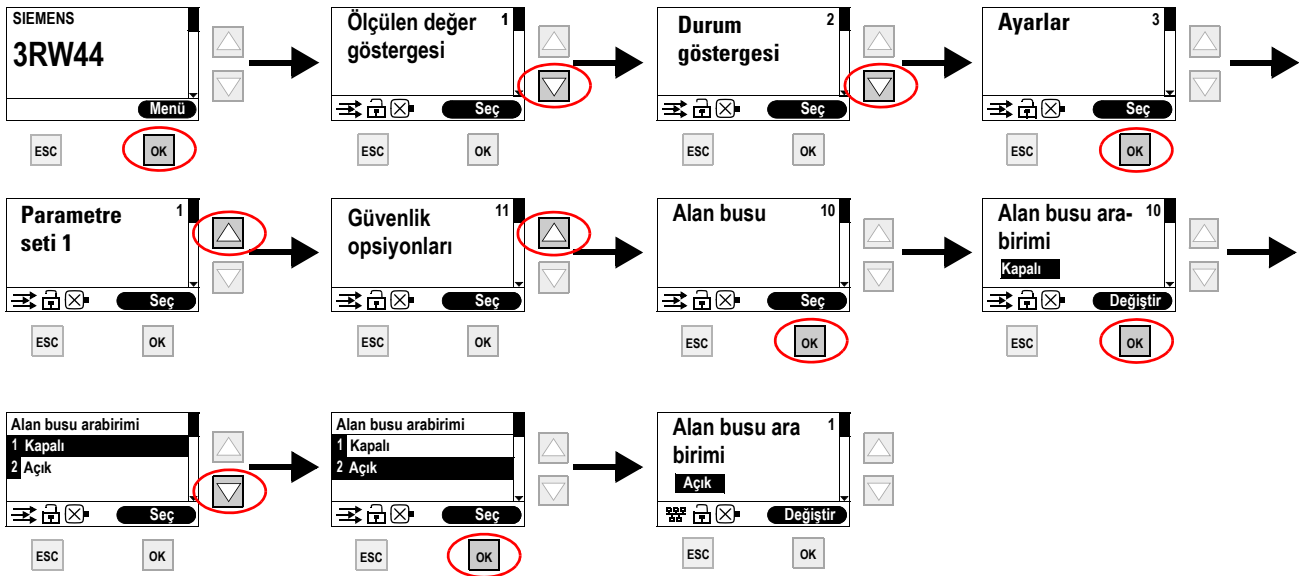
"Soft starter ES" yazılımı şu anda sadece Almanca, İngilizce ve Fransızca dillerinde mevcuttur. Eğer PROFINET iletişim modülünün aktifleştirilmesini yine de yazılım üzerinden yapmak istiyorsanız, 7'deki İngilizce talimatlara uyunuz.

NOT

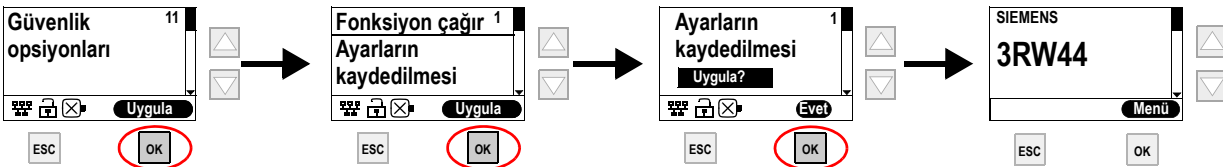
İletişim modülünün aktifleştirilmesinden sonra, standart kontrol yetkisi otomatik olarak girişlerden PROFINET iletişim modülüne geçer. Eğer "Manüel-Yerinde" fonksiyonlu bir giriş aktifleştirilmişse, kontrol yetkisi değişmez.


2.1 PROFINET iletişim modülünün ekran üzerinden aktifleştirilmesi



- İlk kez devreye sokma işleminde çabuk başlatma menüsünü "[Yumuşak Yolverici 3RW44](#)" işletme kılavuzunda (Sipariş numarası: 3ZX1012-0RW44-0AA0) tarif edildiği gibi uygulamanız gerekir.
- Cihazdaki işaretlenmiş tuşa basınız.



- Kırmızı LED ışığı yanıp söner. Eğer alan busu sembolü ekranda belirirse, PROFINET iletişim modülü başarıyla aktifleştirilmiştir.
- "Ayarlar > Alan busu" altında çeşitli parametreleri ayarlayabilirsiniz. İlk işleme alma işlemi için şu parametreler ayarlanmalıdır: Cihaz adı, IP adresi, Alt ağ maskesi. (ayrıca bkz. "PROFINET iletişim modülü" el kitabı, Sipariş No. 3ZX1012-0RW40-0AB0)
- Ayarları kalıcı kaydetmek için, şu prosedür izlenmelidir:



	<p>▲ ОПАСНОСТЬ</p> <p>Опасное напряжение. Опасность для жизни или возможность тяжелых травм. Перед началом работ отключить подачу питания к установке и к устройству.</p>	<p>ЗАМЕТКА</p> <p>Экран кабеля PROFINET должен быть подключен к потенциалу заземления системы.</p>
-----------------------------------------------------------------------------------	---------------------------------------------------------------------------------------------------------------------------------------------------------------------------------------------	-----------------------------------------------------------------------------------------------------------

 <p>Дополнительная информация:</p>	 <p>www.siemens.com/sirius/manuals</p> <p>Справочник по коммуникационному модулю PROFINET № заказа: 3ZX1012-0RW40-0AB0</p>	<p>Справочник по устройству плавного пуска 3RW44 № заказа: 3ZX1012-0RW44-1AJ1</p>
---------------------------------------------------------------------------------------------------------------------	-----------------------------------------------------------------------------------------------------------------------------------------------------------------------------------------------------------------------------------------------------------------	-----------------------------------------------------------------------------------

1. Установка коммуникационного модуля PROFINET

<p>ЗАМЕТКА</p> <p>Опасность материального ущерба. Перед установкой коммуникационного модуля PROFINET необходимо обесточить устройство плавного пуска 3RW44.</p>	<p>Примечание</p> <p>Коммуникационный модуль PROFINET работает только на устройствах 3RW44 начиная с версии "E12" и выше.</p>
-----------------------------------------------------------------------------------------------------------------------------------------------------------------------------------	--------------------------------------------------------------------------------------------------------------------------------------

Поступайте следующим образом:

1. Снимите крышку, как это показано на **рисунке 1** на странице 23.
2. Установите коммуникационный модуль PROFINET в устройство, как это показано на **рисунке 2** на странице 23.
3. Зафиксируйте коммуникационный модуль PROFINET при помощи прилагаемых винтов.
4. Соединительный кабель PROFINET вставьте в одно из гнезд коммуникационного модуля.

Примечание

Допускается одновременное использование максимально двух прямых или одного прямого и одного перекрестного штекерных соединителей.

5. Включите напряжение питания.
СИД ШИНА мигает желтым цветом. Это означает, что коммуникационный модуль вставлен правильно, но еще не активирован.

2. Активация коммуникационного модуля PROFINET

Активируйте функцию устройства "Полевая шина"

- на дисплее или
- с помощью интерфейса устройства, ПО "Soft Starter ES 2007 + SP5" (или более высокая версия)

ВАЖНОЕ УКАЗАНИЕ

В настоящее время ПО "Soft Starter ES" (Устройство плавного пуска ES) доступно только на немецком, английском и французском языках.

Если Вы, тем не менее, желаете активировать коммуникационный модуль PROFINET с помощью ПО, следуйте инструкциям на английском языке на стр. 7.

УКАЗАНИЕ

После активирования коммуникационного модуля стандартный приоритет управления автоматически переназначается с входов на коммуникационный модуль PROFINET.

Если вход выполняет функцию "Ручной локальный", приоритет управления не меняется.

2.1 Активирование коммуникационного модуля PROFINET через дисплей

- При первом вводе в эксплуатацию необходимо пройти через меню быстрого пуска, как описано в [руководстве по эксплуатации "Устройство плавного пуска 3RW44"](#) (№ заказа: 3ZX1012-0RW44-0AA0).
- На приборе нажимайте помеченные ниже клавиши.



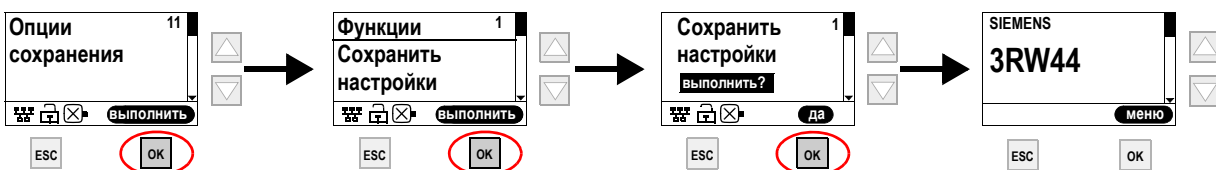
- СИД ШИНА мигает красным цветом.


Появление символа полевой шины  означает, что коммуникационный модуль PROFINET был успешно активирован.



- Под "Настройки > полевой шины" выполняется настройка разных параметров. При первом вводе в эксплуатацию требуется настройка следующий параметров: Название устройства, IP-адрес, маска подсети.

(см. справочник "Коммуникационный модуль PROFINET", № заказа 3ZX1012-0RW40-0AB0)

- Для сохранения настроек выполните следующие действия:



	<p>危险</p> <p>危险电压。 可能导致生命危险或重伤危险。 操作设备时必须确保切断电源。</p>	<p>小心</p> <p>必须将 PROFINET 导线的屏蔽置于设备地电位。</p>
-----------------------------------------------------------------------------------	---------------------------------------------------------------------	----------------------------------------------------

<p></p> <p>详细信息：</p>	<p></p> <p>www.siemens.com/sirius/manuals</p> <p>通信模块 PROFINET 手册 订货号 3ZX1012-0RW40-0AB0</p>	<p>软起动器 3RW44 手册 订货号 3ZX1012-0RW44-1AK1</p>
-------------------------------------------------------------------------------------------------------	---------------------------------------------------------------------------------------------------------------------------------------------------------------------------------------------------------------------------------------	-------------------------------------------------

1. 插入通信模块 PROFINET

<p>注意</p> <p>财产损失危险： 在插入通信模块 PROFINET 之前，将软起动器 3RW44 切换至断电状态。</p>	<p>提示</p> <p>通信模块 PROFINET 只在产品状态为“E12”或更高的 3RW44 设备上运作。</p>
-------------------------------------------------------------------------------------	---------------------------------------------------------------------

请执行下列步骤：

1. 如图 1（第 23 页）所示移除盖板。
2. 如图 2（第 23 页）所示插入通信模块 PROFINET。
3. 用随附的螺钉固定通信模块 PROFINET。
4. 将 PROFINET 连接线插入一个通信模块插口。

提示

最多可以同时使用两个直插头，或者一个直插头和一个弯插头。

5. 接通电源。
“总线”LED 闪烁黄色。通信模块已正确插入，但尚未激活。

2. 激活通信模块 PROFINET

借助“Soft Starter ES 2007 + SP5”（或更高版本）软件，

- 通过显示屏或
- 设备接口，激活设备的“现场总线”功能

重要说明

“Soft Starter ES”软件目前只有德语、英语和法语版本。

如果仍然想要通过软件激活通信模块 PROFINET，请遵循第 7 页上的指导说明（英语）。

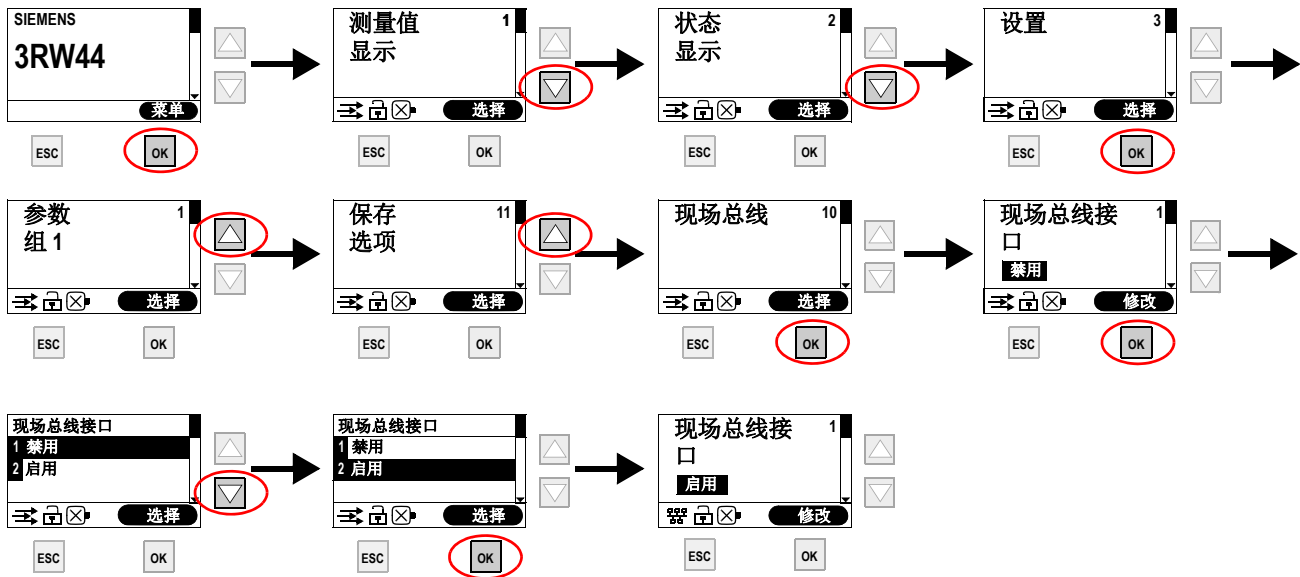
提示

激活通信模块后，标准控制权自动从输入端切换到 PROFINET 通信模块。

如果用“现场手动控制”功能激活输入端，则不切换控制权。

2.1 通过显示屏激活通信模块 PROFINET

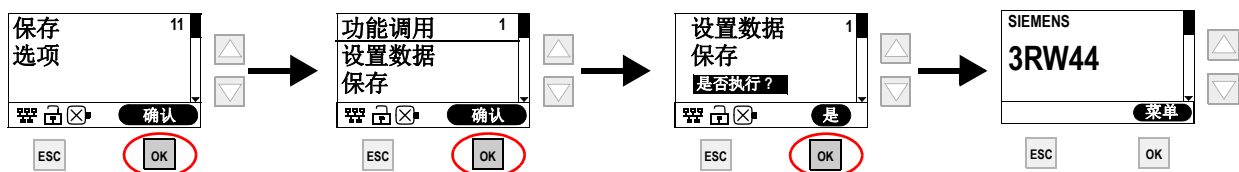
- 初次调试时必须如“[软起动机 3RW44 操作说明书](#)”（订货号：3ZX1012-0RW44-0AA0）中所述，将快捷菜单运行一遍。
- 按下设备上标记的按钮。



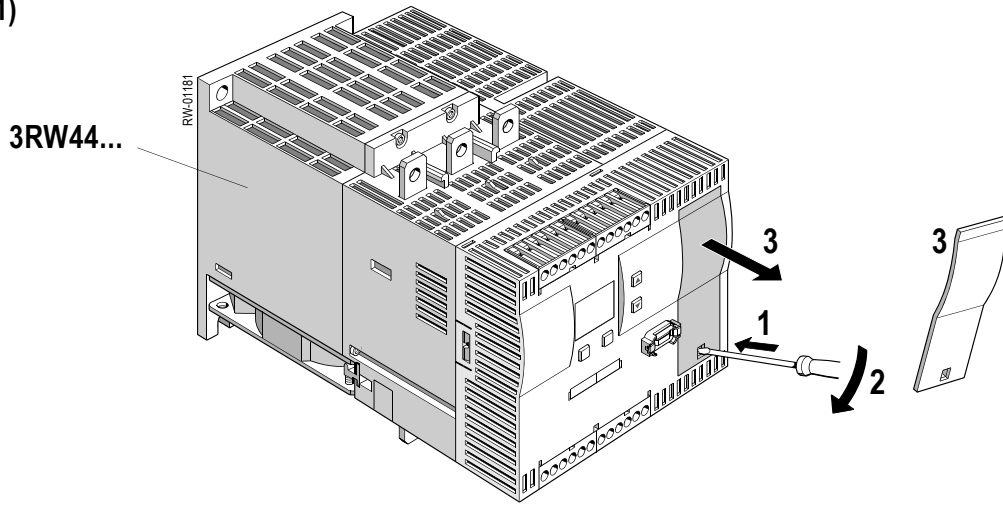
- “总线”LED 闪烁红色。

如果在显示屏中出现现场总线符号 ，则说明通信模块 PROFINET 已成功激活。

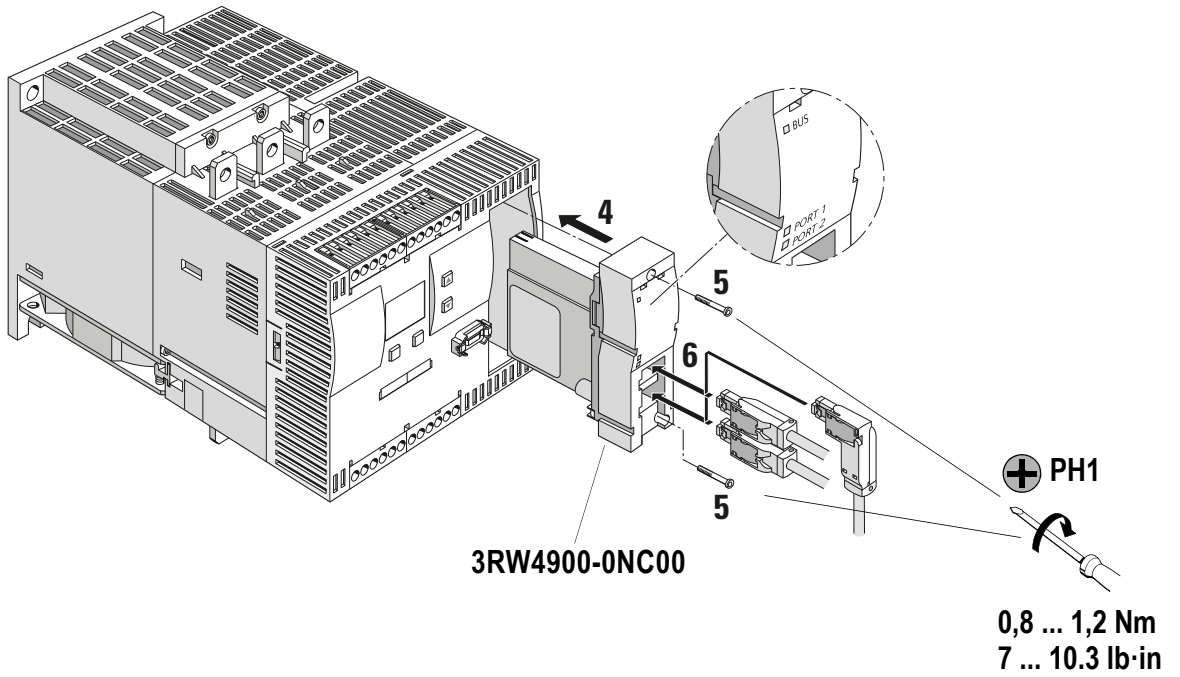
- 在“现场总线 > 设置”中可以设置不同的参数。初次调试时必须设置下列参数：设备名、IP 地址、子网掩码。（参见“通信模块 PROFINET”手册，订货号 3ZX1012-0RW40-0AB0）
- 执行下列步骤可以永久保存设置：



(1)



(2)



(3)

DE	Demontage
EN	Removal
FR	Demontage
ES	Desmontaje
IT	Smontaggio
PT	Desmontagem
TR	Demonte
PY	Демонтаж
中文	拆卸

