

ISO 9001:2008 by L.R.
PED DIR. 97/23/EC by L.R.
ATEX DIR. 94/9/EC by B.V.
FIRE SAFE EXECUTION by L.R.
ISO 15848 by TÜV
ANTISTATIC DEVICE by L.R.
FIRE SAFE TESTED ISO 10497 by L.R.

TYPE
FV4
PN 10 ÷ 40
ANSI 150

NORME E DIRETTIVE APPLICATE DISPONIBILI AL SEGUENTE LINK:
STANDARD AND DIRECTIVE APPLIED AVAILABLE AT FOLLOWING LINK:
http://www.adlerspa.com/pdf/NORME_ADLER.pdf

VALVOLE A SFERA "3 VIE CORPO PIATTO" PASSAGGIO TOTALE 120°

ISO nbr° LRC 0160281 QMS issued by L.R.Q.A. PED nbr° COV 0212112/01 issued by L.R.V.
ATEX nbr° 40.2003.4392 issued by B.V. ISO 15848 nbr° I-148466/1-/2 issued by TÜV

On request
S.I.L. 3
According to IEC 61508

VALVE WITH
PNEUMATIC
ACTUATORS,
LIMIT SWITCHES
AND GEAR BOX

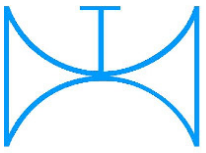
CONSTRUCTION
IN ACCORDING
TO:
ANSI B16.34 -
BS EN 12516-2

FULL BORE ACCORDING
TO ISO 14313

On request
FIRE SAFE
According to ISO 10497
"ISO-FT"

BALL VALVES "3 WAY WAFER" FULL BORE 120°
ROBINETS A BOISSEAU SPHERIQUE
"3 VOIES WAFER" PASSAGE INTEGRAL 120°
KUGELHÄHNE "3 WEGE KOMPAKTHAHN"
VOLLER DURCHGANG 120°

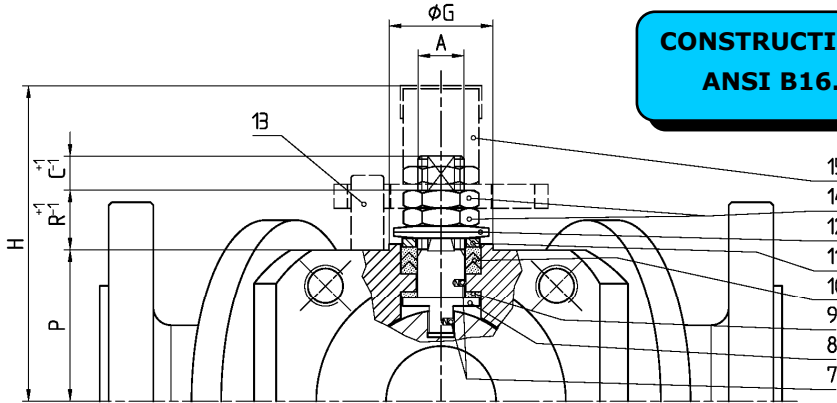
WEB SITE: WWW.ADLERSPA.COM



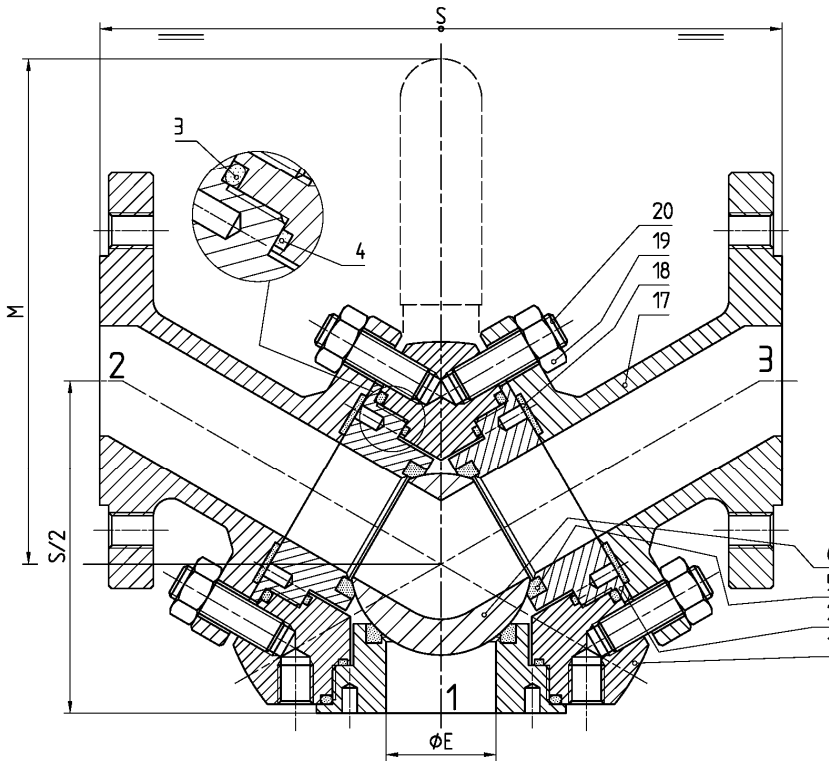
ISO 9001:2008 by L.R.
 PED DIR. 97/23/EC by L.R.
 ATEX DIR. 94/9/EC by B.V.
 FIRE SAFE EXECUTION by L.R.
 ISO 15848 by TÜV
 ANTISTATIC DEVICE by L.R.
 FIRE SAFE TESTED ISO 10497 by L.R.

TYPE
FV4
 PN 10 ÷ 40
 ANSI 150

VALVOLA A SFERA "3 VIE" PASSAGGIO TOTALE 90°
BALL VALVES "3 WAY" FULL BORE 90°
ROBINETS A BOISSEAU SPHERIQUE "3 VOIES" PASSAGE INTEGRAL 90°
KUGELHÄHNE "3 WEGE" VOLLER DURCHGANG 90°

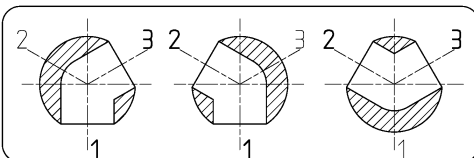


CONSTRUCTION IN ACCORDING TO:
ANSI B16.34 - BS EN 12516-2



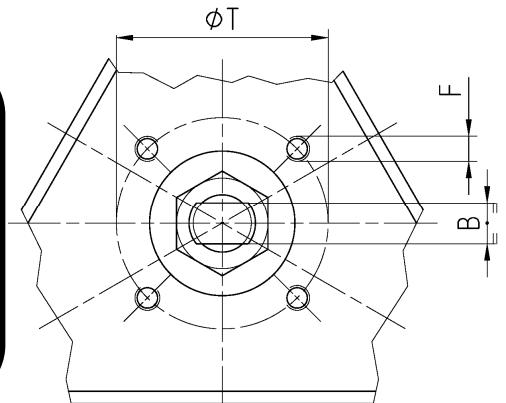
DN 150 ÷ 200
 -CONSIGLIATO
 RIDUTTORE MANUALE
 -MANUAL GEAR BOX
 SUGGESTED
 -REDUCTEUR MANUEL
 CONSEILLE
 -EMPFEHLEN WIR EIN
 HANDGETRIEBE

POSIZIONI OTTENIBILI
 OBTAINABLE POSITIONS
 POSITIONS OBTENABLES
 MÖGLICHE STELLUNGEN



- ACCOPPIAMENTO VALVOLA ATTUATORE
- CONNECTION VALVE ACTUATOR
- ACCOUPLEMENT ROBINET-ACTIONNEUR
- ZUSAMMENBAU KUGELHAHN ANTRIEB

ISO-5211



N.	DESCRIZIONE DESCRIPTION BESCHREIBUNG	MATERIALI MATERIALS MATERIAUX WERKSTOFFE
1	CORPO BODY CORPS KÖRPER	ASTM A105 ASTM A 182 F316- A479 S31600 ASTM A351 CF8M
2	GHIERA INSERT EMBOUT GEWINDED RUCKRING	ASTM A105 ASTM A 182 F316- A479 S31600 ASTM A351 CF8M
3*	O-RING	FKM - (VITON)
4*	ANELLO SEAL ANNEAU DICHTUNGSRING	P.T.F.E.
5*	SEDE SEAT SIEGE SITZRING	P.T.F.E. / R.P.T.F.E. (OPTIONAL)
6	SFERA BALL BOULE KUGEL	ASTM A182 F304-A479 S30400 ASTM A351 CFB ≥ DN 40 ASTM A182 F316-A479 S31600 ASTM A351 CF8M
7	DISPOSITIVO ANTISTATICO ANTISTATIC DEVICE CONTACT ANTISTATIQUE ANTISTATIK VORRICHTUNG	ASTM A479 S31600
8	STELO STEM TIGE SPINDEL	ASTM A182 F304 A479 S30400 ≥ DN 40 ASTM A182 F316 A479 S31600
9*	BUSSOLA STEM SEAL JOINT TIGE UNTERE SPINDEL ABDICHTUNG	P.T.F.E.
10*	PACCO A "V" CHEVRON RINGS JOINT A "V" 3 FACHE DACHMANSCHETTE	P.T.F.E. / GRAFITE P.T.F.E. / GRAPHITE P.T.F.E. / GRAPHITE P.T.F.E. / GRAPHIT

N.	DESCRIZIONE DESCRIPTION BESCHREIBUNG	MATERIALI MATERIALS MATERIAUX WERKSTOFFE
11	PREMIBUSSOLA PRESSING BUSH PRESSE RONDELLE STOPFBUCHSDRUCKRING	ASTM A479 S31600
12	MOLLE A TAZZA SPRING WASHERS RONDELLES BELLEVILLE TELLERFEDERN	C72/50Cr V4 X5CrNi17.7 or X12CrNi17.7 ON REQUEST
13	VITE DI FERMO E FERMO PIN AND STOP PIN PLOT ET PLOT D'ARRET ANSCHLAGBOLZEN	UNI 3740 8.8 UNI 3951 A2-70 ON REQUEST
14	DADO - CONTRODADO NUT - LOCK NUT ECROU - CONTRE-ECROU MUTTER - KONTERMUTTER	UNI 3740 - 6S ASTM A479 304 ON REQUEST
15	LEVA WRENCH LEVIER HANDHEBEL	UNI 5946 Fe 37 ASTM A479 304 ON REQUEST
16		
17	LATERALE END LATERAL GEGENGEHÄUSE	ASTM A105 ASTM A 182 F316- A479 S31600 ASTM A351 CF8M
18*	GUARNIZIONE GASKET JOINT DICHTRING	P.T.F.E.
19	TIRANTE BOLT BOULON ZUGBOLZEN	ASTM A 193 B7 ZINCATO - GALVANIZED ZINGUE - VERZINKT
20	DADO NUT ECROU MUTTEI	UNI 3740 - 6S ZINCATO - GALVANIZED ZINGUE - VERZINKT

* RICAMBI CONSIGLIATI - RECOMMENDED SPARE PARTS - PIECES DE RECHANGE CONSEILLEES - ERSATZTEIL EMPFEHLUNG

DIMENSIONI - DIMENSION - DIMENSIONS - ABMESSUNGEN

DN	10	15	20	25	32	40	50	65	80	100	125	150	200	250	300
A						16	16	22	22	30	30	42	48		
B						10	10	14	14	18	18	28	32		
C						10	10	12	12	17	17	19	20		
E						38	51	64	76	101	118	152	203		
F						M6	M6	M8	M8	M10	M10	M12	M16		
ISO						F05	F05	F07	F07	F10	F10	F12	F14		
G						35	35	55	55	70	70	85	100		
H						109	119	143	152	172	185	253	295		
M						280	280	370	370	470	650	750	900		
P						55	65	82	90,5	99,5	113	144	183		
R						20	20	23	23	26	26	34	36		
S						200	230	290	310	350	400	550	600		
T						50	50	70	70	102	102	125	140		
~Kg						19	27	39	50	63	82	150	225		
~Kg												100	162		

VEDERE TYPE
SEE F U T Z 4
VOIR PN 10 ÷ 16
SIEHE ANSI 150

DN 40 ÷ 125
- LEVA SINGOLA
- SINGLE WRENCH
- LEVIER UNIQUE
- STANDARDHANDHEBEL

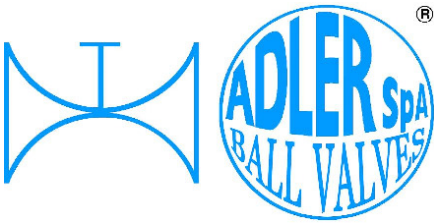
DN 150 ÷ 200
- LEVA DOPPIA
- DUAL WRENCH
- LEVIER DOUBLE
- DOPPELHANDHEBEL

- DATI E CARATTERISTICHE SOGGETTI A VARIAZIONI SENZA PREAVVISO
- SPECIFICATIONS SUBJECT TO MODIFICATION WITHOUT PRIOR NOTICE
- TOUS DROITS DE MODIFICATION RESERVES
- KONSTRUKTIONSÄNDERUNGEN VORBEHALTEN

ASTM A105 ASTM / A 182 F316- A479 S31600

ASTM A351 CF8M





ISO 9001:2008 by L.R.
 PED DIR. 97/23/EC by L.R.
 ATEX DIR. 94/9/EC by B.V.
 FIRE SAFE EXECUTION by L.R.
 ISO 15848 by TÜV
 ANTISTATIC DEVICE by L.R.
 FIRE SAFE TESTED ISO 10497 by L.R.

TYPE
FV4
 PN 10 ÷ 40
 ANSI 150

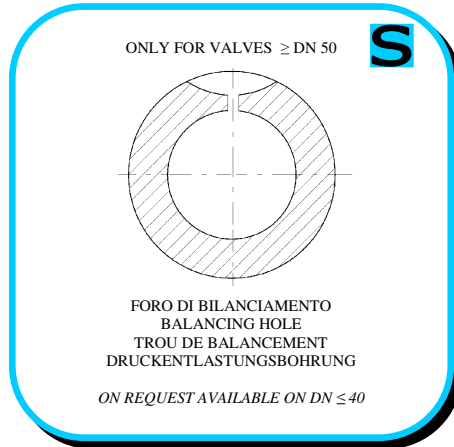
VALVOLA A SFERA "3 VIE" PASSAGGIO TOTALE 90°
 BALL VALVES "3 WAY" FULL BORE 90°

ROBINETS A BOISSEAU SPHERIQUE "3 VOIES" PASSAGE INTEGRAL 90°
 KUGELHÄHNE "3 WEGE VOLLER DURCHGANG 90°

• ESECUZIONI • EXECUTIONS • EXECUTIONS • AUSFÜHRUNGEN



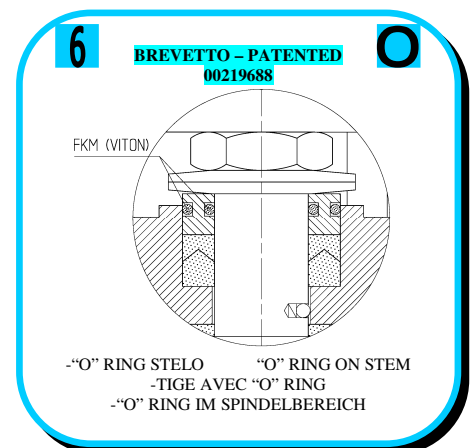
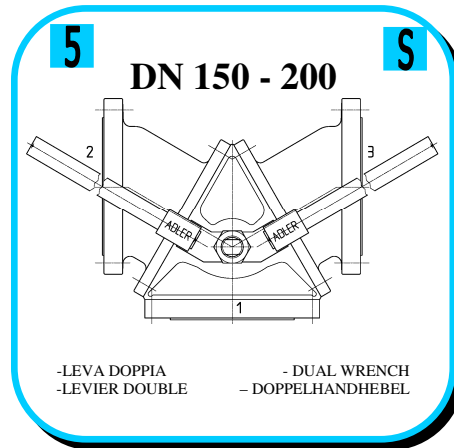
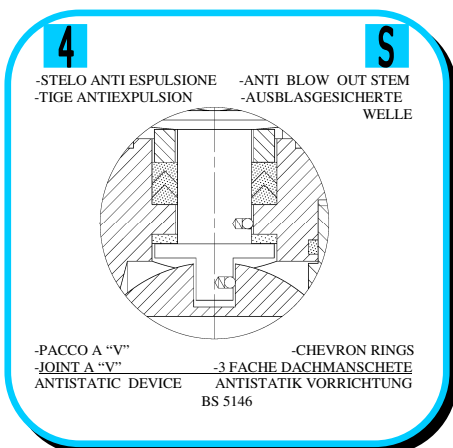
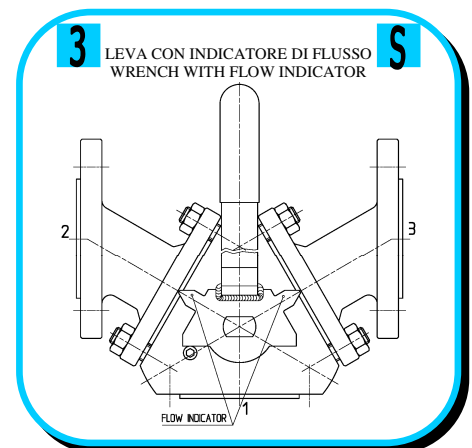
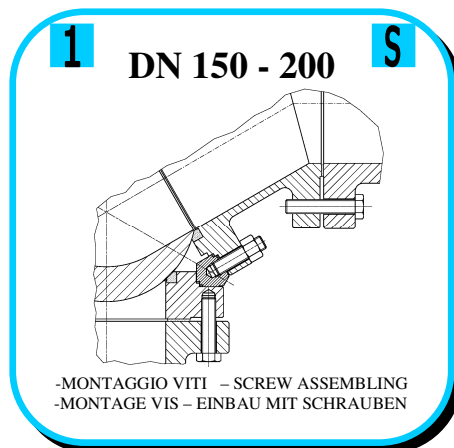
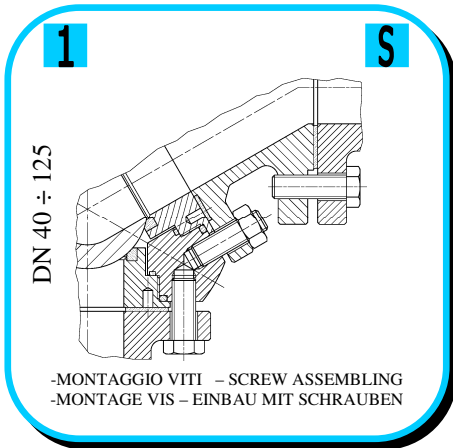
EXECUTION 4 - 12

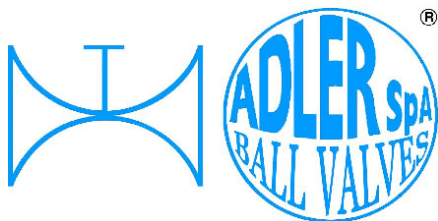


EXECUTION 6 - 16

S STANDARD

O OPTIONAL





ISO 9001:2008 by L.R.
 PED DIR. 97/23/EC by L.R.
 ATEX DIR. 94/9/EC by B.V.
 FIRE SAFE EXECUTION by L.R.
 ISO 15848 by TÜV
 ANTISTATIC DEVICE by L.R.
 FIRE SAFE TESTED ISO 10497 by L.R.

TYPE
FV4
 PN 10 ÷ 40
 ANSI 150

VALVOLA A SFERA "3 VIE" PASSAGGIO TOTALE 90°
 BALL VALVES "3 WAY" FULL BORE 90°

ROBINETS A BOISSEAU SPHERIQUE "3 VOIES" PASSAGE INTEGRAL 90°
 KUGELHÄHNE "3 WEGE VOLLER DURCHGANG 90°

• ESECUZIONI • EXECUTIONS • EXECUTIONS • AUSFÜHRUNGEN

7 **O**

-PROLUNGA STELO -STEM EXTENSION
 -TIGE PROLONGEE -SPINDELVERLÄNGERUNG

8 **O**

-PARTICOLARI INOX
 -STAINLESS STEEL DETAILS
 -ACCESSOIRES EN INOX
 -EDELSTAHLTEILE

9 **S**

-ATTACCO "ISO" -"ISO" CONNECTIONS
 -SYSTEM "ISO" -ANSCHLUSS "ISO"

10 **S**

-SFERA CONTENUTA -CONTENTS BALL
 -BOULE CONTENUE
 -NICHT RAUSRAGENDE KUGEL

ADLER

UNA GAMMA COMPLETA
 PRIVILEGIANDO LA QUALITA'

A COMPLETE RANGE PRIVILEGING
 THE QUALITY

12 **O**

FIRE SAFE
 ISO 10497 "ISO-FT"
 (BS 6755 / API 607)

13 **S**

DN 40 ÷ 125

-DOPPIA TENUTA -DOUBLE SEALS
 -DOUBLE ETANCHEITE -DOPPELTE ABDICHTUNG
 -GHIERA A BATTUTA -METAL BEATING RING
 -EMBOUT AVEC BATTUE MECANIQUE
 -METALLISCHER ANSCHLAG DES
 GEWINDEDRUCKRINGS

14 **O**

VEDERE / ISO 14313

-FORO DI SCARICO NELLA SFERA
 -OVERPRESSURE HOLE INTO BALL
 -TROU DECOMPRESSION DANS LA BOULE
 -ENTLASTUNGSBOHRUNG IN DER KUGEL

15 **O**

P.T.F.E./GRAPHITE
 100-250
 P.T.F.E.
 -SERVIZIO CRIOGENICO - CRYOGENIC SERVICE
 -SERVICE CRYOGÉNIQUE
 -TIEFTEMPERATUR SERVICE

16 **O**

-FIRE SAFE ISO FT + "O" RING STELO
 -FIRE SAFE ISO FT + "O" RING ON STEM
 -SECURITE FEU ISO FT + TIGE AVEC "O" RING
 -FEUERSICHERE AUSFÜHRUNG ISO FT +
 "O" RING IM SPINDELBEREICH

17 **S**

DN 150 - 200

BREVETTO - PATENTED
 00219619

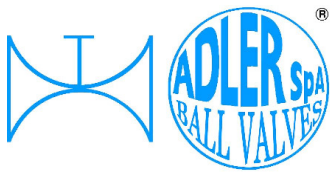
DOPPIA TENUTA - DOUBLE SEALS
 DOUBLE ETACHEITE
 DOPPELTE ABDICHTUNG

18 **S**

DN 150 ÷ 200

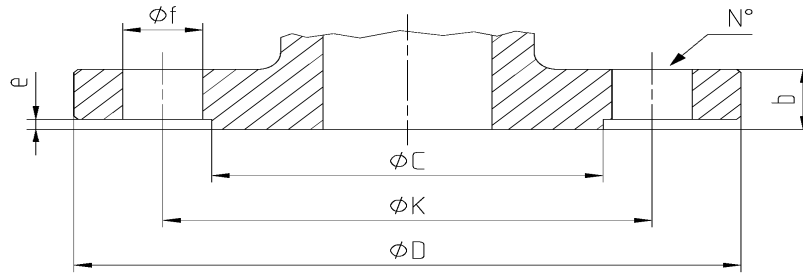
UNIONE CORPO LATERALE CON VITE
 BODY AND END ASSEMBLING WITH SCREW

Screw UNI 3740-8.8
 GALVANIZED



DIMENSIONI FLANGE UNI EN 1092-1
FLANGE DIMENSION UNI EN 1092-1
DIMENSIONS BRIDES UNI EN 1092-1
FLANSCHANSCHLUSSMASSEE UNI EN 1092-1

TABLE 03



DN	Ref.	10	15	20	25	32	40	50	65	80	100	125	150	200	250	300
PN 10	D						150	165	185	200	220	250	285	340		
	C						88	102	122	138	158	188	212	268		
	K						110	125	145	160	180	210	240	295		
	N°						4	4	4*	8	8	8	8	8		
	f						18	18	18	18	18	18	22	22		
	b						18	18	18	20	20	22	22	24		
	e						3	3	3	3	3	3	3	3		
PN 16	D						150	165	185	200	220	250	285	340		
	C						88	102	122	138	158	188	212	268		
	K						110	125	145	160	180	210	240	295		
	N°						4	4	4*	8	8	8	8	12		
	F						18	18	18	18	18	18	22	22		
	b						18	18	18	20	20	22	22	24		
	e						3	3	3	3	3	3	3	3		

ANSI B16.5 (OPTIONAL)

DN	Ref.	1/2"	3/4"	1"	1 1/4"	1 1/2"	2"	2 1/2"	3"	4"	5"	6"	8"	10"	12"
ANSI 150 RF	D					127	152.4	177.8	190.5	228.6	254	279.4	342.9		
	C					92	104.7	127	157.3	185.7	215.9	269.8	269.8		
	K					98.6	120.7	139.7	152.4	190.5	215.9	241.3	298.5		
	N°					4	4	4	4	8	8	8	8		
	f					19.1	19.1	19.1	19.1	19.1	22.4	22.4	22.4		
	b					17.6	19.1	22.4	23.9	23.9	23.9	25.4	28.5		
	e					1.6	1.6	1.6	1.6	1.6	1.6	1.6	1.6		

