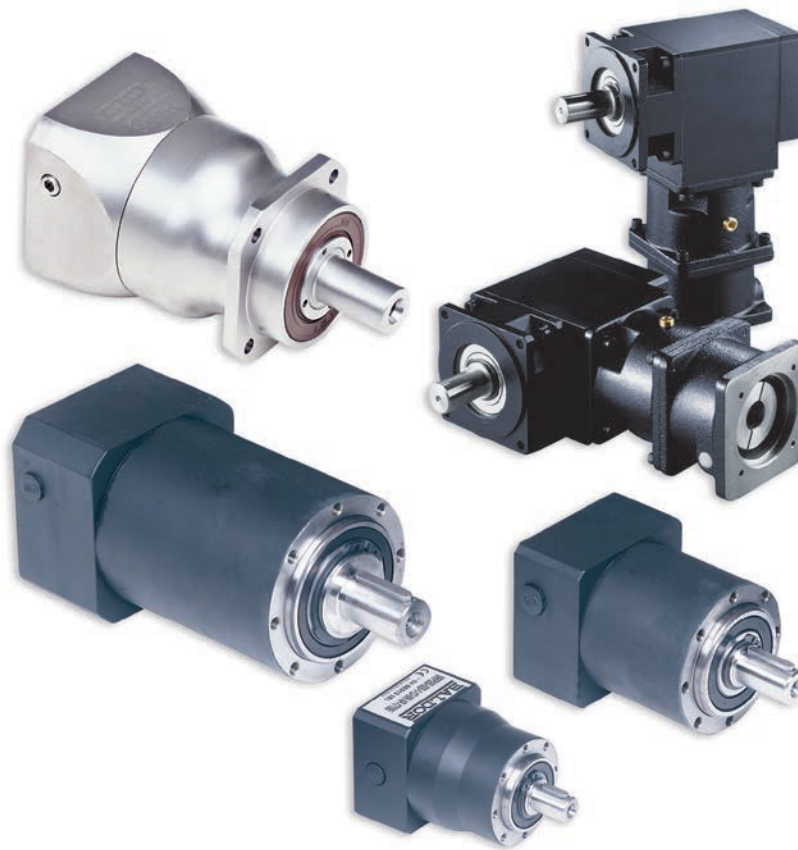


# Servo Gearheads GBSM Series

BR1204  
Effective Date:  
May 2014



**BALDOR**  
A MEMBER OF THE ABB GROUP

# Specify with Confidence

## Solutions

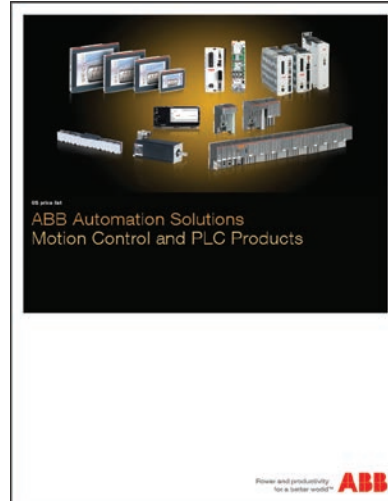
ABB's comprehensive range includes PLCs, multi-axis motion controllers, high performance servo drives, and rotary and linear servo motors – all designed to seamlessly interface with each other to provide a complete motion solution. This allows you to minimise your design time, save development costs, and maximise your time to market.

## Choice

We firmly believe in offering our customers a range of products to fit a variety of market needs. Whether this means delivering a product from stock, designing a product for your specific application, accessing technical data, or how you place your order, we make it easy to do business with us. Our products are designed to handle simple through to demanding applications.

## Quality, Reliability, & Design

By using the latest CAD tools and manufacturing techniques, our engineering teams work side-by-side through design, product development, manufacture, and final test to make sure that total quality and reliability is built into and stays with each product throughout its long lifetime.



< [www.abbmotion.com](http://www.abbmotion.com)  
website and product support site

## Experience

Technical knowledge is the key to solving customers' needs. Our extensive experience has been gained over many years through close customer contact from product development to field maintenance, providing invaluable feedback for our product development process - ensuring our motion control products meet the ease of use, flexibility, and performance demanded by the markets we serve.

Application notes reflecting our knowledge and ability are available for download on the web at [www.abbmotion.com](http://www.abbmotion.com).

## Information

Information must be comprehensive and easily accessed. To make it easier for our customers, we provide a complete range of product literature as well as a website dedicated to motion control products - [www.abbmotion.com](http://www.abbmotion.com). This brings together in one location, all the information relevant to motion control products and includes technical information, latest news, application stories, application notes, and support.

# Precision Gearheads Designed specifically for BSM Servo Motors

Planetary gearheads designed for servo applications requiring precision, durability, and long trouble free operation. These are high efficiency gearheads that maximize the power transmission capability. They are designed with low backlash to reduce shock loads in dynamic reversing applications. They mount directly to the BSM servo motor family to provide torque multiplication, speed reduction, and inertia matching.

- > Standard servo rated gearheads
- > Stainless steel gearheads
- > Standard and lower backlash available
- > Right angle gearheads available
- > High efficiency

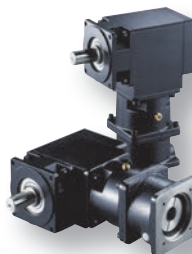
## Table Of Contents



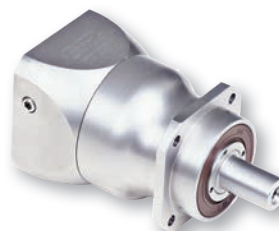
MRP - Series standard 10 to 15 arc-min backlash . . . . 2



MNT - Series higher torque 6-15 arc-min backlash . . . . 8



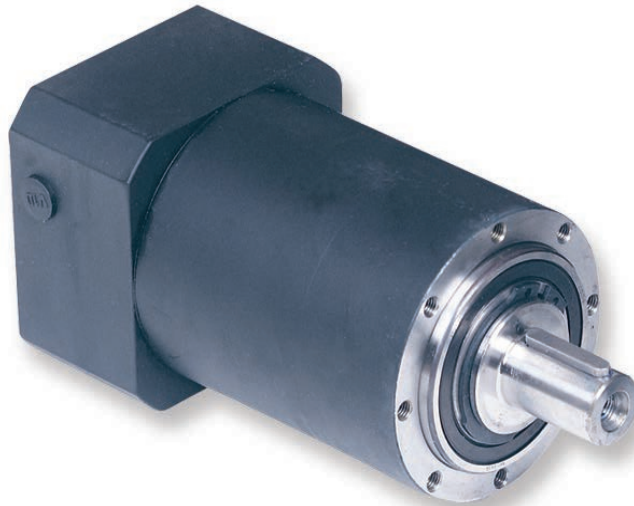
MRA - Series right angle servo gearheads . . . . . 14



MSS - Series stainless steel servo rated gearheads . . . 20

# Standard Servo Rated Gearheads - MRP Series

These planetary gearheads provide a standard backlash of 10 - 15 arc min and are designed for mounting directly on to ABB's BSM servo motors. These efficient gearheads will maximize power transmission capability in applications.



## Standard Gearhead

- > Standard backlash is 10 - 15 arc-min max
- > Round face with tapped holes
- > Integrated, self-locating input pinion clamps onto motor shaft
- > Lubrication - grease - 15 K hours
- > Satellite gear shaft is cantilever supported in carrier (needle bearings)
- > Satellite gear teeth - deep case hardened and finish ground
- > Medium to high torque/size & torsional stiffness
- > Gearhead housing - aluminum input module, steel output module
- > IP64

# Quick Selection Guide for Standard MRP Servo Rated Gearheads

10 to 15 arc min backlash

MOTOR BSM Series	SELECTION CHART FOR BSM C-SERIES AND STANDARD GEARHEADS (MRP)												
	1 Stage Ratios					2 Stage Ratios							
	3	4	5	7	10	16	20	25	35	40	50	70	100
80C – 1XX	090	090	090	090	090	090	090	090	090	090	120	120	155
80C – 2XX	090	090	090	090	090	090	120	120	120	120	120	155	*
80C – 3XX	090	090	090	090	120	120	120	120	120	120	155	155	*
80C – 4XX	090	090	090	090	120	120	120	120	120	155	155	*	*
90C – 1XX	120	120	120	120	120	120	120	120	120	120	120	155	*
90C – 2XX	120	120	120	120	120	120	120	120	155	155	155	*	*
90C – 3XX	120	120	120	120	155	120	120	155	155	*	*	*	*
100C – 1XXX	120	120	120	120	120	120	120	120	120	155	155	*	*
100C – 2XXX	120	120	120	120	155	120	155	155	*	*	*	*	*
100C – 3XXX	120	120	120	120	155	155	155	*	*	*	*	*	*
100C – 4XXX	120	120	120	155	*	*	*	*	*	*	*	*	*
100C – 5XXX	120	120	155	*	*	*	*	*	*	*	*	*	*
100C – 6XXX	120	120	155	*	*	*	*	*	*	*	*	*	*

Ordering nonmenclature: for Gearhead only

G BSM80 - MRP090 - 4  
 Gear Motor Gearhead type Ratio

MOTOR BSM Series	SELECTION CHART FOR BSM N-SERIES AND STANDARD GEARHEADS (MRP)												
	1 Stage Ratios					2 Stage Ratios							
	3	4	5	7	10	16	20	25	35	40	50	70	100
50N – 1XX	070	050	050	050	050	050	070	090	090	090	090	090	*
50N – 2XX	070	050	050	070	070	070	090	090	090	090	090	*	*
50N – 3XX	070	050	070	070	070	090	090	090	090	090	*	*	*
63N – 1XX	070	070	070	070	070	070	070	090	090	090	090	120	120
63N – 2XX	070	070	070	070	070	090	090	090	090	120	120	120	*
63N – 3XX	070	070	070	070	090	090	090	120	120	120	120	120	*
80N – 1XX	090	090	090	090	090	090	090	090	120	120	120	120	155
80N – 2XX	090	090	090	090	090	090	120	120	120	120	120	155	*
80N – 3XX	090	090	090	090	120	120	120	120	120	155	155	*	*
90N – 1XX	120	120	120	120	120	120	120	120	155	155	155	*	*
90N – 2XX	120	120	120	120	155	120	155	155	*	*	*	*	*
90N – 3XX	120	120	120	120	155	155	155	155	*	*	*	*	*
100N – 1XXX	120	120	120	120	155	155	155	*	*	*	*	*	*
100N – 2XXX	120	120	120	155	*	*	*	*	*	*	*	*	*
100N – 3XXX	120	120	155	155	*	*	*	*	*	*	*	*	*
100N – 4XXX	120	120	155	*	*	*	*	*	*	*	*	*	*

Ordering nonmenclature: for Gearhead only

G BSM50 - MRP050 - 10  
 Gear Motor Gearhead type Ratio

# Characteristics of Standard Planetary Gearheads

## MRP 050

No of Stages		1 - Stage					2 - Stages						
Ratio		4	5	7	10	16	20	25	35	40	50	70	100
<b>INPUT</b>													
Rated speed / Max.	rpm												
Power in @ T1 & N1 rated	Kw	0.67	0.54	0.29	0.21	0.21	0.13	0.13	0.08	0.04	0.04	0.04	0.04
Rated torque (T1)	Lb-in	14.2	11.5	6.2	4.4	4.4	2.7	2.7	1.8	0.88	0.88	0.88	0.88
	Nm	1.6	1.3	0.7	0.5	0.5	0.3	0.3	0.2	0.1	0.1	0.1	0.1
Accel torque <sup>(1)</sup>	Lb-in	27.4	22.1	13.3	8.8	7.1	5.3	4.4	2.7	2.7	1.8	1.8	0.88
	Nm	3.1	2.5	1.5	1	0.8	0.6	0.5	0.3	0.3	0.2	0.2	0.1
<b>OUTPUT</b>													
Rated speed	rpm	1000	800	571	400	250	200	160	114	100	80	57	57
Rated torque (T2)	Lb-in	53	53	44	44	62	53	53	44	44	44	44	44
	Nm	6	6	5	5	7	6	6	5	5	5	5	5
Accel torque <sup>(1)</sup>	Lb-in	106	106	88	88	106	106	106	88	88	88	88	88
	Nm	12	12	10	10	12	12	12	10	10	10	10	10
<b>GENERAL DATA</b>													
Inertia <sup>(2)</sup>	Lb-in-s <sup>2</sup> x10 <sup>-4</sup>	0.65	0.65	0.62	0.62	0.58	0.58	0.58	0.56	0.53	0.53	0.53	0.53
	Kg-m <sup>2</sup> x10 <sup>-5</sup>	0.74	0.74	0.70	0.70	0.65	0.65	0.65	0.63	0.60	0.60	0.60	0.60
Max. Backlash	arc-mins	12					15						
Efficiency	% <sup>(3)</sup>	96					91						
Rated Life	H	15,000											
Weight	Kg / Lbf	0.9/2					1.2/2.7						
Radial Load <sup>(4)</sup>	N / Lbf	700/157											
Axial Load	N / Lbf	700/157											

## MRP 070

No of Stages		1 - Stage					2 - Stages							
Ratio		3	4	5	7	10	16	20	25	35	40	50	70	100
<b>INPUT</b>														
Rated speed / Max.	rpm	4000 / 6000												
Power in @ T1 & N1 rated	Kw	1.5	1.1	0.9	0.7	0.4	0.6	0.4	0.3	0.2	0.2	0.2	0.1	0.05
Rated torque (T1)	Lb-in	48.7	37.2	29.2	19.5	13.3	11.5	7.1	6.2	3.5	3.5	2.7	1.8	0.88
	Nm	5.5	4.2	3.3	2.2	1.5	1.3	0.8	0.7	0.4	0.4	0.3	0.2	0.1
Accel torque <sup>(1)</sup>	Lb-in	97.4	73.5	58.4	38.1	26.6	18.6	15.0	12.4	8.0	6.2	5.3	5.3	2.7
	Nm	11	8.3	6.6	4.3	3	2.1	1.7	1.4	0.9	0.7	0.6	0.6	0.3
<b>OUTPUT</b>														
Rated speed	rpm	1333	1000	800	571	400	250	200	160	114	100	80	57	57
Rated torque (T2)	Lb-in	142	142	142	133	133	177	142	142	133	133	133	133	133
	Nm	16	16	16	15	15	20	16	16	15	15	15	15	15
Accel torque <sup>(1)</sup>	Lb-in	283	283	283	257	257	283	283	283	257	257	257	257	257
	Nm	32	32	32	29	29	32	32	32	29	29	29	29	29
<b>GENERAL DATA</b>														
Inertia <sup>(2)</sup>	Lb-in-s <sup>2</sup> x10 <sup>-4</sup>	0.956	0.947	0.867	0.805	0.779	0.912	0.938	0.797	0.779	0.770	0.770	0.770	0.752
	Kg-m <sup>2</sup> x10 <sup>-5</sup>	1.08	1.07	0.98	0.91	0.88	1.03	1.06	0.90	0.88	0.87	0.87	0.87	0.85
Max. Backlash	arc-mins	12					15							
Efficiency <sup>(3)</sup>	%	96					94							
Rated Life	H	15,000												
Weight	Kg / Lbf	1.5/3.3					2/4.4							
Radial Load <sup>(4)</sup>	N / Lbf	1500/337												
Axial Load	N / Lbf	1500/337												

Note: (1) S5 duty service. (2) On the motorside. (3) Theoretical gear efficiency value.

(4) Load applied in the middle of the output shaft at 300 rpm.

(5) Emergency Stop Torque is 2.5 times Rated Output Torque for 1000 times max during the service life of the gearhead.

# Characteristics of Standard Planetary Gearheads

## MRP 090

No of Stages		1 - Stage					2 - Stages							
Ratio		3	4	5	7	10	16	20	25	35	40	50	70	100
<b>INPUT</b>														
Rated speed / Max.	rpm	4000 / 6000												
Power in @ T1 & N1 rated	Kw	6.2	4.7	4	2.5	1.2	1.3	1	0.7	0.5	0.5	0.4	0.3	0.1
Rated torque (T1)	Lb-in	150	115	97.4	62	27	31	24.8	15.9	13.3	11.5	8.8	5.3	2.7
	Nm	17	13	11	7	3	3.5	2.8	1.8	1.5	1.3	1	0.6	0.3
Accel torque <sup>(1)</sup>	Lb-in	248	186	150	97.4	66.4	48.7	39.8	31	22.1	18	18	8.8	7.1
	Nm	28	21	17	11	7.5	5.5	4.5	3.5	2.5	2	2	1	0.8
<b>OUTPUT</b>														
Rated speed	rpm	1167	875	700	500	350	219	175	140	100	87.5	70	50	35
Rated torque (T2)	Lb-in	443	443	443	443	310	443	443	443	443	443	443	310	310
	Nm	50	50	50	45	35	50	50	50	50	50	50	35	35
Accel torque <sup>(1)</sup>	Lb-in	708	708	708	637	637	708	708	708	708	708	708	637	637
	Nm	80	80	80	72	72	80	80	80	80	80	80	72	72
<b>GENERAL DATA</b>														
Inertia <sup>(2)</sup>	Lb-in-s <sup>2</sup> x10 <sup>-4</sup>	4.6	4.6	4.5	4.2	4.1	4.4	4.4	4.4	4.2	4.2	4.0	3.8	3.8
	Kg-m <sup>2</sup> x10 <sup>-5</sup>	5.2	5.2	5.1	4.8	4.6	5	5	5	4.7	4.7	4.5	4.3	4.3
Max. Backlash	arc-mins	10					12							
Efficiency <sup>(3)</sup>	%	96					91							
Rated Life	H						15,000							
Weight	Kg / Lbf	3/6.6					4/8.8							
Radial Load <sup>(4)</sup>	N / Lbf						2500/562							
Axial Load	N / Lbf						2000/450							

## MRP 120

No of Stages		1 - Stage					2 - Stages							
Ratio		3	4	5	7	10	16	20	25	35	40	50	70	100
<b>INPUT</b>														
Rated speed / Max.	rpm	4000 / 6000												
Power in @ T1 & N1 rated	Kw	15	12	8.5	5	3	3	2.5	2	1.5	1	0.8	0.6	0.3
Rated torque (T1)	Lb-in	478	372	266	159	84.1	97.4	80	62	44	35	27	18	8.8
	Nm	54	42	30	18	9.5	11	9	7	5	4	3	2	1
Accel torque <sup>(1)</sup>	Lb-in	611	460	363	416	168	124	115	97.4	71	53	44	27	18
	Nm	69	52	41	47	19	14	13	11	8	6	5	3	2
<b>OUTPUT</b>														
Rated speed	rpm	1000	750	600	429	300	187.5	150	120	85.5	75	60	43	30
Rated torque (T2)	Lb-in	1372	1416	1283	1062	797	1416	1443	1407	1407	1283	1204	1124	805
	Nm	155	160	145	120	90	160	163	159	159	145	136	127	91
Accel torque <sup>(1)</sup>	Lb-in	1770	1770	1770	1593	1593	1814	2080	2213	2257	1903	1991	1593	1593
	Nm	200	200	200	180	180	205	235	250	255	215	225	180	180
<b>GENERAL DATA</b>														
Inertia <sup>(2)</sup>	Lb-in-s <sup>2</sup> x10 <sup>-4</sup>	15.6	15.6	14.7	14.6	14.0	150	14.9	14.7	14.3	14.3	13.8	13.8	13.8
	Kg-m <sup>2</sup> x10 <sup>-5</sup>	17.6	17.6	16.6	16.5	15.8	16.9	16.8	16.6	16.2	16.2	15.6	15.6	15.6
Max. Backlash	arc-mins	10					12							
Efficiency <sup>(3)</sup>	%	96					91							
Rated Life	H						15,000							
Weight	Kg / Lbf	7/15.4					9/19.8							
Radial Load <sup>(4)</sup>	N / Lbf						4500/1010							
Axial Load	N / Lbf						4000/900							

Note: (1) S5 duty service. (2) On the motorside. (3) Theoretical gear efficiency value.

(4) Load applied in the middle of the output shaft at 300 rpm.

(5) Emergency Stop Torque is 2.5 times Rated Output Torque for 1000 times max during the service life of the gearhead.

## Characteristics of Standard Planetary Gearheads

### MRP 155

No of Stages		1 - Stage					2 - Stages							
Ratio		3	4	5	7	10	16	20	25	35	40	50	70	100
<b>INPUT</b>														
Rated speed / Max.	rpm	4000 / 6000												
Power in @ T1 & N1 rated	Kw	15	16	13	8	4	4	3.5	3	2	1.5	1.5	0.8	0.4
Rated torque (T1)	Lb-in	646	673	540	336	159	177	142	115	80	62	53	35	18
	Nm	73	76	61	38	18	20	16	13	9	7	6	4	2
Accel torque <sup>(1)</sup>	Lb-in	1230	920	735	460	292	239	195	150	106	97.4	71	44	27
	Nm	139	104	83	52	33	27	22	17	12	11	8	5	3
<b>OUTPUT</b>														
Rated speed	rpm	666	500	400	285	200	125	100	80	57	50	40	28	20
Rated torque (T2)	Lb-in	1859	2567	2567	2257	1505	2567	2567	2567	2390	2213	2213	2213	1505
	Nm	210	290	290	255	170	290	290	290	270	250	250	230	170
Accel torque <sup>(1)</sup>	Lb-in	3540	3540	3540	3098	2832	3540	3540	3540	3540	3540	3540	2832	2832
	Nm	400	400	400	350	320	400	400	400	400	400	400	320	320
<b>GENERAL DATA</b>														
Inertia <sup>(2)</sup>	Lb-in-s <sup>2</sup> x10 <sup>-4</sup>	33.6	31	31	27.4	25.7	32.7	32.7	30.1	28.3	26.6	24.8	24.8	24.8
	Kg-m <sup>2</sup> x10 <sup>-5</sup>	38	35	35	31	29	37	37	34	32	30	28	28	28
Max. Backlash	arc-mins	10					12							
Efficiency <sup>(3)</sup>	%	96					91							
Rated Life	H						15,000							
Weight	Kg / Lbf	10/22					15/33							
Radial Load <sup>(4)</sup>	N / Lbf						7500/1690							
Axial Load	N / Lbf						6000/1350							

Note: (1) S5 duty service. (2) On the motorside. (3) Theoretical gear efficiency value.

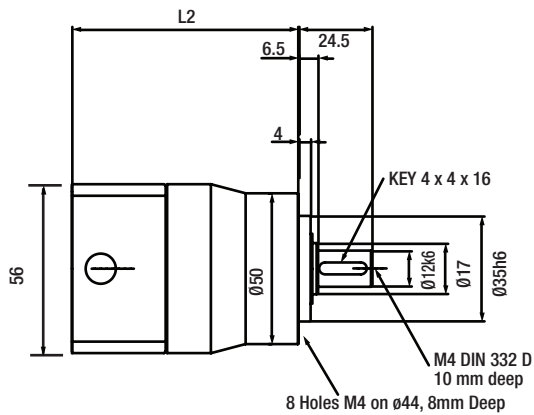
(4) Load applied in the middle of the output shaft at 300 rpm.

(5) Emergency Stop Torque is 2.5 times Rated Output Torque for 1000 times max during the service life of the gearhead.

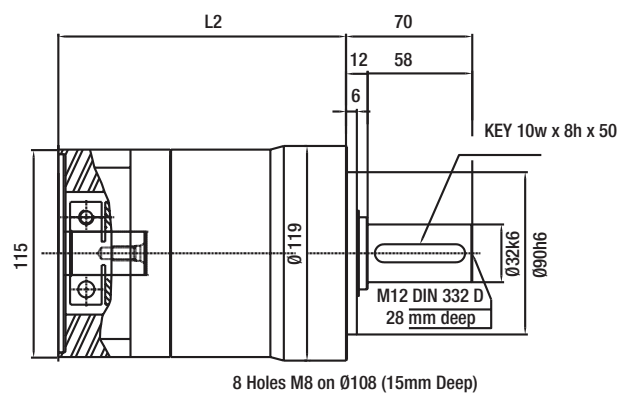


## Standard Gearhead Dimensions

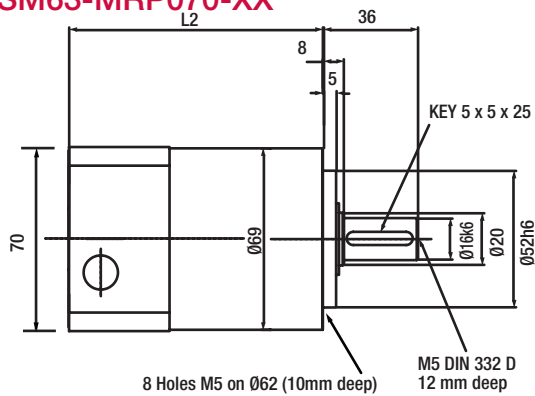
### GBSM50-MRP050-XX



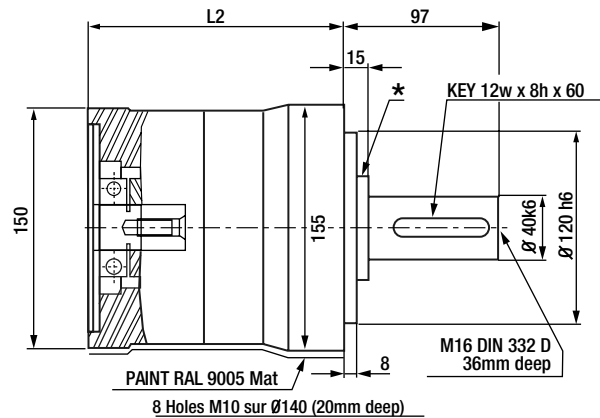
### GBSM90-MRP120-XX



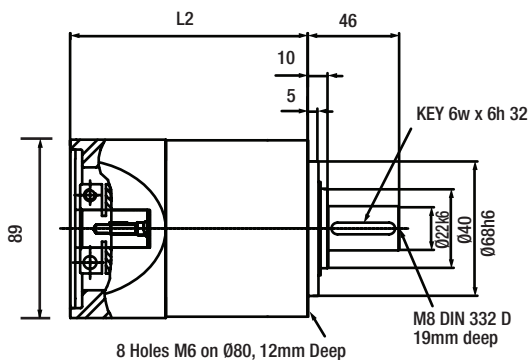
### GBSM63-MRP070-XX



### GBSM100-MRP155-XX



### GBSM80-MRP090



## Standard Gearhead Dimensions

Gear Number	No. of Stages	"L2" Length (mm)
MRP050	1	70
	2	97
MRP070	1	96
	2	113
MRP090	1	121
	2	157
MRP120	1	160
	2	202
MRP155	1	185
	2	225

Note: "XX" insert specific gear ratios. Verify that motor torque does not exceed gear rated input torque.  
Other BSM and gearhead possibility exist. Contact Baldor with your requirements. Dimensions in mm.

# Higher Torque/Lower Backlash Servo Rated Gearheads - MNT Series

These planetary servo rated gearheads provide a higher rated torque input and output capability along with lower backlash of 6-15 arc-min, with optional 3-5 arc-min backlash. These are highly efficient gearheads. They are designed to mount directly to ABB's BSM servo motors.



## Higher Torque/Lower Backlash Gearhead

- > Higher rated torque and higher acceleration torque capability
- > Backlash of 6 to 15 arc-min; lower optional 3 to 5 arc-min
- > Square flange
- > Integrated, self-locating input pinion clamps onto motor shaft
- > Lubrication - grease - 15 K hours
- > Satellite gear shaft is double supported in carrier (needle bearings)
- > Satellite gear teeth - deep case hardened and finish ground
- > Highest torque/size & torsional stiffness
- > Gearhead housing - all steel
- > IP64

## Quick Selection Guide for Higher Torque MNT Servo Gearheads

6 to 15 arc min backlash

MOTOR	SELECTION CHART FOR BSM C-SERIES AND HIGHER TORQUE GEARHEADS (MNT)													
	BSM Series	1 Stage Ratios					2 Stage Ratios							
		3	4	5	7	10	16	20	25	35	40	50	70	100
80C – 1XX	080	080	080	080	080	080	080	080	080	080	080	080	115	115
80C – 2XX	080	080	080	080	080	080	080	080	080	115	115	115	140	140
80C – 3XX	080	080	080	080	080	080	080	080	115	115	115	115	*	*
80C – 4XX	080	080	080	080	080	080	080	115	115	115	115	140	*	*
90C – 1XX	115	115	115	115	115	115	115	115	115	115	115	115	140	180
90C – 2XX	115	115	115	115	115	115	115	115	115	115	115	140	180	180
90C – 3XX	115	115	115	115	115	115	115	115	115	140	140	180	180	180
100C – 1XXX	115	115	115	115	115	115	115	115	115	115	115	140	180	180
100C – 2XXX	115	115	115	115	115	115	115	115	140	140	140	210	*	*
100C – 3XXX	115	115	115	115	115	115	115	140	140	180	180	*	*	*
100C – 4XXX	115	115	115	115	115	140	140	140	180	210	210	*	*	*
100C – 5XXX	115	115	115	115	115	140	140	180	210	210	*	*	*	*
100C – 6XXX	140	140	140	140	140	180	180	180	210	*	*	*	*	*

Ordering nonmenclature: for Gearhead only

G BSM80 - MNT080 - 10  
 Gear Motor Gearhead type Ratio

MOTOR	SELECTION CHART FOR BSM N-SERIES AND HIGHER TORQUE GEARHEADS (MNT)													
	BSM Series	1 Stage Ratios					2 Stage Ratios							
		3	4	5	7	10	16	20	25	35	40	50	70	100
50N – 1XX	065	065	065	065	065	065	065	065	065	065	065	080	080	
50N – 2XX	065	065	065	065	065	065	065	065	065	080	080	080	*	
50N – 3XX	065	065	065	065	065	065	065	080	080	080	080	*	*	
63N – 1XX	065	065	065	065	065	065	065	065	065	080	080	080	115	
63N – 2XX	065	065	065	065	065	065	065	080	080	080	080	115	115	
63N – 3XX	065	065	065	065	065	065	080	080	080	080	080	115	115	
80N – 1XX	080	080	080	080	080	080	080	080	080	080	080	115	115	
80N – 2XX	080	080	080	080	080	080	080	080	115	115	115	115	140	
80N – 3XX	080	080	080	080	080	080	080	115	115	115	115	140	*	
90N – 1XX	115	115	115	115	115	115	115	115	115	115	115	140	180	
90N – 2XX	115	115	115	115	115	115	115	115	140	140	140	180	*	
90N – 3XX	115	115	115	115	115	115	115	140	140	180	180	210	*	
100N – 1XXX	115	115	115	115	115	115	115	140	140	180	180	210	*	
100N – 2XXX	115	115	115	115	140	140	140	140	210	210	*	*	*	
100N – 3XXX	115	115	115	140	180	180	180	210	*	*	*	*	*	
100N – 4XXX	115	115	115	140	*	210	210	210	*	*	*	*	*	

Ordering nonmenclature: for Gearhead only

G BSM80 - MNT065 - 10  
 Gear Motor Gearhead type Ratio

## Characteristics of Higher Torque Gearheads

### MNT 065

No of Stages		1 - Stage					2 - Stages						
Ratio		3	4	5	7	10	16	20	25	35	50	70	100
<b>INPUT</b>													
Rated speed / Max.	rpm	4000 / 6000											
Power in @ T1 & N1 rated	Kw	1.87	1.87	1.56	1.19	0.67	1.00	0.67	0.54	.039	0.26	0.16	0.08
Rated torque (T1)	Lb-in	60.6	45.6	36.3	27.4	17.3	21.2	14.1	11.2	8.1	5.7	3.5	1.8
	Nm	6.85	5.15	4.10	3.10	1.95	2.40	1.59	1.27	0.91	0.64	0.39	0.20
Accel torque <sup>(1)</sup>	Lb-in	118.0	88	66.8	47.8	28.8	28.0	19.5	15.6	11.7	8.1	5.6	3.1
	Nm	13.35	10	7.55	5.40	3.25	3.16	2.20	1.76	1.32	0.92	0.63	0.35
<b>OUTPUT</b>													
Rated speed	rpm	1333	1000	800	571	400	250	200	160	114	80	57	40
Rated torque (T2)	Lb-in	174	174	174	184	165	310	257	257	257	257	221	159
	Nm	19.7	19.7	19.7	20.8	18.7	35	29	29	29	29	25	18
Accel torque <sup>(1)</sup>	Lb-in	336	336	319	319	274	407	354	354	372	372	354	283
	Nm	38	38	36	36	31	46	40	40	42	42	40	32
<b>GENERAL DATA</b>													
Inertia <sup>(2)</sup>	Lb-in-s <sup>2</sup> x10 <sup>-4</sup>	3.7	3.7	3.7	3.44	3.31	3.62	3.4	3.57	3.4	3.3	3.3	3.3
	Kg-m <sup>2</sup> x10 <sup>-5</sup>	3.30	3.30	3.27	3.04	2.93	3.20	3.00	3.16	3.00	2.90	2.90	2.90
Max. Backlash	arc-mins	15 or 5											
Efficiency <sup>(3)</sup>	%	96					91						
Rated Life	H	15,000											
Weight	Kg / Lbf	1.7/3.8					2.2/4.9						
Radial Load <sup>(4)</sup>	N / Lbf	1500/337											
Axial Load	N / Lbf	1300/292											

### MNT 080

No of Stages		1 - Stage					2 - Stages							
Ratio		3	4	5	7	10	16	20	25	35	40	50	70	100
<b>INPUT</b>														
Rated speed / Max.	rpm	4000 / 6000												
Power in @ T1 & N1 rated	Kw	12.3	9.2	7.4	4.3	2.2	2.5	1.9	1.6	1.2	0.9	0.8	0.5	0.2
Rated torque (T1)	Lb-in	261	196	157	92	46	52	42	33	24	20	17	12	4.4
	Nm	29.5	22.1	17.7	10.4	5.2	5.9	4.7	3.7	2.7	2.3	1.9	1.3	0.5
Accel torque <sup>(1)</sup>	Lb-in	336	257	186	133	71	80	62	53	35	31	27	18	9
	Nm	38	29	21	15	8	9	7	6	4	3.5	3	2	1
<b>OUTPUT</b>														
Rated speed	rpm	1333	1000	800	571	400	250	200	160	114	100	80	57	40
Rated torque (T2)	Lb-in	752	752	752	619	442	761	752	752	761	752	752	619	442
	Nm	85	85	85	70	50	86	85	85	86	85	85	70	50
Accel torque <sup>(1)</sup>	Lb-in	973	973	885	885	708	1106	1115	1150	1186	1115	1115	885	708
	Nm	110	110	100	100	80	125	126	130	134	126	126	100	80
<b>GENERAL DATA</b>														
Inertia <sup>(2)</sup>	Lb-in-s <sup>2</sup> x10 <sup>-4</sup>	12.8	12.8	11.8	10.8	10.5	12.2	12.1	11.3	10.6	10.3	12.2	12.2	12.1
	Kg-m <sup>2</sup> x10 <sup>-5</sup>	11.3	11.3	10.4	9.6	9.3	10.8	10.7	10	9.4	9.1	10.8	10.8	10.7
Max. Backlash	arc-mins	10, 5 or 1												
Efficiency	% <sup>(3)</sup>	96					91							
Rated Life	H	15,000												
Weight	Kg / Lbf	3 / 6.7					4 / 8.9							
Radial Load <sup>(4)</sup>	N / Lbf	3,500 / 787												
Axial Load	N / Lbf	3,000 / 675												

Note: (1) S5 duty service. (2) On the motorside. (3) Theoretical gear efficiency value.

(4) Load applied in the middle of the output shaft at 300 rpm.

(5) Emergency Stop Torque is 2.5 times Rated Output Torque for 1000 times max during the service life of the gearhead.

# Characteristics of Higher Torque Gearheads

## MNT 115

No of Stages		1 - Stage					2 - Stages							
Ratio		3	4	5	7	10	16	20	25	35	40	50	70	100
<b>INPUT</b>														
Rated speed / Max.	rpm	4000 / 6000												
Power in @ T1 & N1 rated	Kw	31.4	31.4	22.2	12.6	6.3	8.3	6.7	5	3.8	2.5	2.1	1.7	1.4
Rated torque (T1)	Lb-in	796	619	442	265	133	177	142	106	80	62	53	35	18
	Nm	90	70	50	30	15	20	16	12	9	7	6	4	2
Accel torque <sup>(1)</sup>	Lb-in	920	717	496	327	186	204	186	150	115	80	71	44	27
	Nm	104	81	56	37	21	23	21	17	13	9	8	5	3
<b>OUTPUT</b>														
Rated speed	rpm	1333	1000	800	571	400	250	200	160	114	100	82	57	40
Rated torque (T2)	Lb-in	2390	2390	2115	1673	1195	2390	2390	2257	2372	2257	2264	2265	1593
	Nm	270	270	239	189	135	270	270	255	268	255	256	256	180
Accel torque <sup>(1)</sup>	Lb-in	2708	2743	2390	2212	1770	3009	3380	3407	3451	2743	2743	2832	2390
	Nm	306	310	270	250	200	340	382	385	390	310	310	320	270
<b>GENERAL DATA</b>														
Inertia <sup>(2)</sup>	Lb-in-s <sup>2</sup> x10 <sup>-4</sup>	50.2	50.2	45.7	41.6	39.7	47.8	47	44	41	39.2	47.6	47.6	47.3
	Kg-m <sup>2</sup> x10 <sup>-5</sup>	44.4	44.4	40.4	36.8	35.1	42.3	42	38.9	36	34.7	42.1	42.1	41.9
Max. Backlash	arc-mins	10, 5 or 1												
Efficiency	% <sup>(3)</sup>	96					91							
Rated Life	H						15000							
Weight	Kg / Lbf	7.5/16.5					9/20							
Radial Load <sup>(4)</sup>	N / Lbf						5500/1237							
Axial Load	N / Lbf						5000/1124							

## MNT 140

No of Stages		1 - Stage					2 - Stages							
Ratio		3	4	5	7	10	16	20	25	35	40	50	70	100
<b>INPUT</b>														
Rated speed / Max.	rpm	4000 / 6000												
Power in @ T1 & N1 rated	Kw	41.9	41.9	40.1	22.9	11.3	12.1	12.1	9.6	6.7	4.6	3.4	2.9	2.5
Rated torque (T1)	Lb-in	1106	885	850	487	239	257	257	204	142	106	88	53	27
	Nm	125	100	96	55	27	29	29	23	16	12	10	6	3
Accel torque <sup>(1)</sup>	Lb-in	1531	1150	920	655	363	301	274	221	150	133	106	71	35
	Nm	173	130	104	74	41	34	31	25	17	15	12	8	4
<b>OUTPUT</b>														
Rated speed	rpm	1333	1000	800	571	400	250	200	160	114	100	82	57	40
Rated torque (T2)	Lb-in	3186	3398	3982	3265	2292	3487	4363	4327	4212	3982	3982	3363	2416
	Nm	360	384	450	369	259	394	493	489	476	450	450	380	273
Accel torque <sup>(1)</sup>	Lb-in	4425	4425	4425	4425	3540	4425	4956	4956	4780	4832	4876	4425	3186
	Nm	500	500	500	500	400	500	560	560	540	546	550	500	360
<b>GENERAL DATA</b>														
Inertia <sup>(2)</sup>	Lb-in-s <sup>2</sup> x10 <sup>-4</sup>	107	101	97	87	81	103	103	96	90	85	79	79	79
	Kg-m <sup>2</sup> x10 <sup>-5</sup>	95	89	86	77	72	91	91	85	80	75	70	70	70
Max. Backlash	arc-mins	10, 5 or 1												
Efficiency	% <sup>(3)</sup>	96					91							
Rated Life	H						15,000							
Weight	Kg / Lbf	9/20					17/38							
Radial Load <sup>(4)</sup>	N / Lbf						9,100/2,046							
Axial Load	N / Lbf						9,100/2,046							

Note: (1) S5 duty service. (2) On the motorside. (3) Theoretical gear efficiency value.

(4) Load applied in the middle of the output shaft at 300 rpm.

(5) Emergency Stop Torque is 2.5 times Rated Output Torque for 1000 times max during the service life of the gearhead.

## Characteristics of Higher Torque Gearheads

### MNT 180

No of Stages		1 - Stage					2 - Stages							
Ratio		3	4	5	7	10	16	20	25	35	40	50	70	100
<b>INPUT</b>														
Rated speed / Max.	rpm	4000 / 6000												
Power in @ T1 & N1 rated	Kw	56.5	56.5	56.5	34.3	16.7	15.9	15.9	12.5	9.2	6.2	4.1	4.1	3.3
Rated torque (T1)	Lb-in	1681	1265	1195	726	504	336	336	265	195	133	133	71	53
	Nm	190	143	135	82	57	38	38	30	22	15	15	8	6
Accel torque <sup>(1)</sup>	Lb-in	3097	2301	1841	1390	735	711	487	389	274	239	195	142	80
	Nm	350	260	208	157	83	69	55	44	31	27	22	16	9
<b>OUTPUT</b>														
Rated speed	rpm	667	500	400	286	200	125	100	80	57	50	40	29	20
Rated torque (T2)	Lb-in	4867	4867	5752	4867	4867	4894	6115	6035	6195	4823	6018	4867	4867
	Nm	550	550	650	550	550	553	691	682	700	545	680	550	550
Accel torque <sup>(1)</sup>	Lb-in	8850	8850	8850	8850	7080	8850	8850	8850	8850	8850	8850	8850	7080
	Nm	1000	1000	1000	1000	800	1000	1000	1000	1000	1000	1000	1000	1000
<b>GENERAL DATA</b>														
Inertia <sup>(2)</sup>	Lb-in-s <sup>2</sup> x10 <sup>-4</sup>	500	296	234	183	156	255	252	206	167	169	147	145	141
	Kg-m <sup>2</sup> x10 <sup>-5</sup>	442	262	207	162	138	226	223	182	148	132	130	128	125
Max. Backlash	arc-mins	6 or 3												
Efficiency	% <sup>(3)</sup>	96					91							
Rated Life	H						15,000							
Weight	Kg / Lbf	45/100					50/112							
Radial Load <sup>(4)</sup>	N / Lbf						14,500/3,260							
Axial Load	N / Lbf						14,000/3,147							

### MNT 210

No of Stages		1 - Stage					2 - Stages							
Ratio		3	4	5	7	10	16	20	25	35	40	50	70	100
<b>INPUT</b>														
Rated speed / Max.	rpm	4000 / 6000												
Power in @ T1 & N1 rated	Kw	145	109	87	62	43	29	23	18	13	11	9	7	4
Rated torque (T1)	Lb-in	3080	2310	1850	1310	920	611	487	389	283	239	195	142	80
	Nm	348	261	209	148	104	69	55	44	32	27	22	16	9
Accel torque <sup>(1)</sup>	Lb-in	5841	4381	1735	1973	1381	1150	920	743	416	363	292	204	142
	Nm	660	495	196	223	156	130	104	84	47	41	33	23	16
<b>OUTPUT</b>														
Rated speed	rpm	667	500	400	286	200	125	100	80	57	50	40	29	20
Rated torque (T2)	Lb-in	8850	8850	8850	8850	8850	8850	8850	8850	8850	8850	8850	8850	8850
	Nm	1000	1000	1000	1000	1000	1000	1000	1000	1000	1000	1000	1000	1000
Accel torque <sup>(1)</sup>	Lb-in	16800	16800	16800	16800	13300	16800	16800	16800	13300	13300	13300	13300	13300
	Nm	1900	1900	1900	1900	1500	1900	1900	1900	1500	1500	1500	1500	1500
<b>GENERAL DATA</b>														
Inertia <sup>(2)</sup>	Lb-in-s <sup>2</sup> x10 <sup>-4</sup>													
	Kg-m <sup>2</sup> x10 <sup>-5</sup>													
Max. Backlash	arc-mins	6 or 3												
Efficiency	% <sup>(3)</sup>	96					91							
Rated Life	H						15,000							
Weight	Kg / Lbf	50/112					55/123							
Radial Load <sup>(4)</sup>	N / Lbf						18,000/4,047							
Axial Load	N / Lbf						18,000/4,047							

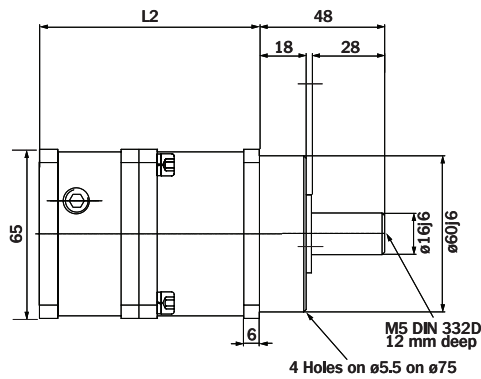
Note: (1) S5 duty service. (2) On the motorside. (3) Theoretical gear efficiency value.

(4) Load applied in the middle of the output shaft at 300 rpm.

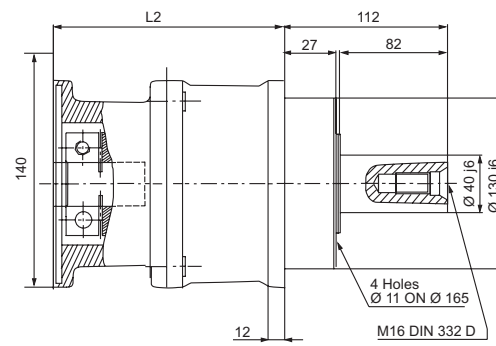
(5) Emergency Stop Torque is 2.5 times Rated Output Torque for 1000 times max during the service life of the gearhead.

## Higher Torque Gearhead Dimensions

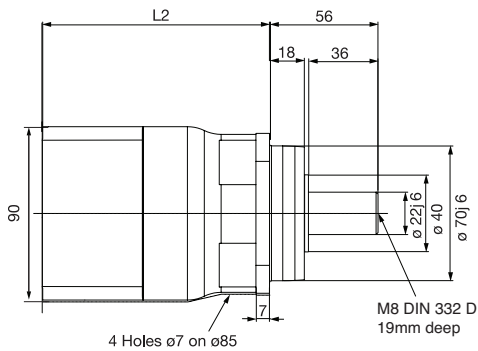
### GBSM63-MNT065-XX



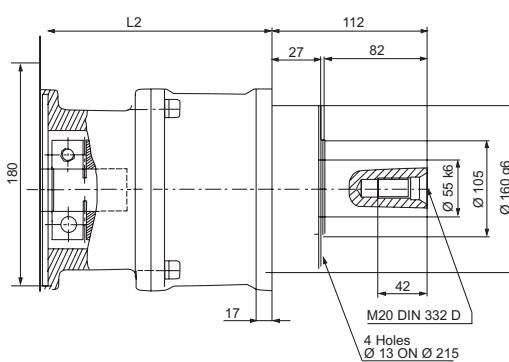
### GBSM100-MNT140-XX



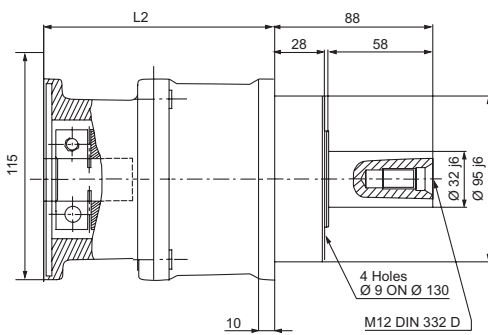
### GBSM80-MNT080-XX



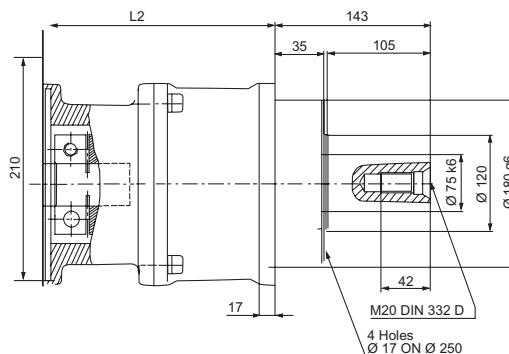
### GBSM100-MNT180-XX



### GBSM90-MNT115-XX



### GBSM100-MNT210-XX

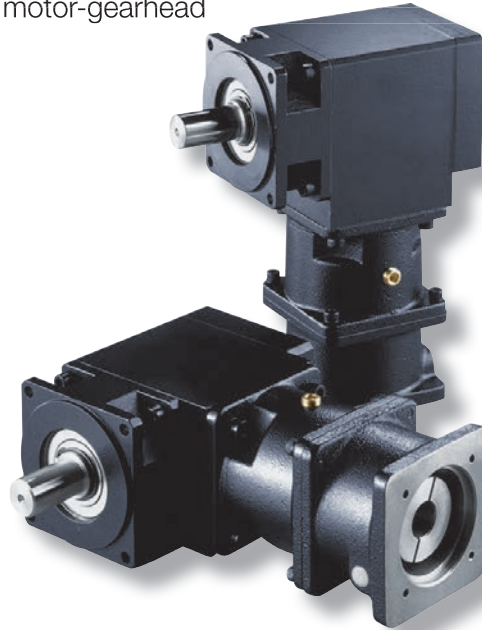


Gear Number	No. of Stages	"L2" Length (mm)
MNT065	1	84
	2	107
MNT080	1	120
	2	156
MNT115	1	130
	2	171
MNT140	1	160
	2	201
MNT180	1	230
	2	295
MNT210	1	260
	2	325

Note: "XX" insert specific gear ratios. Verify that motor torque does not exceed gear rated input torque.  
Other BSM and gearhead possibility exist. Contact Baldor with your requirements. Dimensions in mm.

# Right Angle Servo Rated GearHeads - MRA Series

These servo rated right angle gearheads are heavy duty and provide 15, 10 or 5 arc-min backlash. The planetary input stages are hardened and ground with steel housings for rigidity. The distance from the face mounting to the motor centerline is short, allowing the motor-gearhead to hug the machine frame.



## Right Angle Gearhead

- > Backlash of 5 - 15 arc-min
- > Integrated, self-locating input pinion clamps onto motor shaft
- > Lubrication - in line planetary section oil; bevel gear section metal adhering grease; shaft seal between; - 10 K hours
- > Planetary input stages are hardened and ground, slower speed right-angle has cut and hardened gears
- > Standard output shaft is "smooth shaft" - keyways upon request
- > High torque/size & torsional stiffness
- > Gearhead housing - all steel
- > IP64



## Quick Selection Guide for Right Angle MRA Servo Gearheads

MOTOR BSM Series	SELECTION CHART FOR BSM N-SERIES AND RIGHT ANGLE GEARHEADS (MRA)											
	1 Stage Ratios					2 Stage Ratios						
	3	4	5	7	10	16	20	25	35	50	70	100
50N - 1XX	065	065	065	065	065	065	065	065	065	080	080	80
50N - 2XX	065	065	065	065	065	065	065	080	080	080	080	115
50N - 3XX	065	065	080	080	080	080	080	080	080	080	115	115
63N - 1XX	065	065	065	065	065	065	065	065	080	080	080	115
63N - 2XX	065	065	065	080	080	080	080	080	080	080	115	115
63N - 3XX	065	065	065	080	080	080	080	080	080	080	115	115
80N - 1XX	080	080	080	080	080	080	080	080	080	080	115	115
80N - 2XX	080	080	080	080	080	080	080	080	115	115	140	180
80N - 3XX	080	080	080	080	080	080	080	115	115	140	180	*
90N - 1XX	115	115	115	115	115	115	115	115	140	180	180	*
90N - 2XX	115	115	115	115	115	115	115	140	180	*	*	*
90N - 3XX	115	115	115	115	115	115	180	180	*	*	*	*
100N-1XXX	115	115	115	115	115	140	180	180	*	*	*	*
100N-2XXX	115	115	115	115	140	180	*	*	*	*	*	*
100N-3XXX	115	115	115	140	180	*	*	*	*	*	*	*
100N-4XXX	115	115	140	180	*	*	*	*	*	*	*	*

Ordering nonmenclature: for Gearhead only

G BSM80 - MRA065 - 10  
 Gear Motor Gearhead type Ratio

MOTOR BSM Series	SELECTION CHART FOR BSM C-SERIES AND RIGHT ANGLE GEARHEADS (MRA)											
	1 Stage Ratios					2 Stage Ratios						
	3	4	5	7	10	16	20	25	35	50	70	100
80C - 1XX	080	080	080	080	080	080	080	080	080	080	080	115
80C - 2XX	080	080	080	080	080	080	080	080	080	115	140	180
80C - 3XX	080	080	080	080	080	080	080	080	115	115	140	180
80C - 4XX	080	080	080	080	080	080	080	115	115	140	180	*
90C - 1XX	115	115	115	115	115	120	115	115	140	180	180	*
90C - 2XX	115	115	115	115	115	120	115	115	140	180	180	*
90C - 3XX	115	115	115	115	115	115	115	115	140	180	*	*
100C - 1XXX	115 +	115 +	115 +	115 +	115 +	115 +	115 +	115 +	115 +	140	180	*
100C - 2XXX	115 +	115 +	115 +	115 +	115 +	115 +	115 +	140	180	*	*	*
100C - 3XXX	115 +	115 +	115 +	115 +	115 +	140	180	180	*	*	*	*
100C - 4XXX	115 +	115 +	115 +	115 +	140	180	180	*	*	*	*	*
100C - 5XXX	115 +	115 +	115 +	115 +	180	180	*	*	*	*	*	*
100C - 6XXX	115 +	115 +	115 +	140	180	*	*	*	*	*	*	*

Ordering nonmenclature: for Gearhead only

G BSM80 - MRA080 - 4  
 Gear Motor Gearhead type Ratio

Note: The table suggests using MRA140 for better looking physical match of motor to gearhead

# Characteristics of Right Angle Gearheads

## MRA 065

No of Stages		1 - Stage					2 - Stages						
Ratio		3	4	5	7	10	16	20	25	35	50	70	100
<b>INPUT</b>													
Rated speed / Max.	rpm	4000 / 6000											
Rated Power	Kw	1.05	0.78	0.78	0.55	0.39	0.47	0.39	0.31	0.23	0.16	0.11	0.08
Rated torque	Lb-in	22.1	16.6	17.7	11.5	8.3	10.0	8.4	6.7	5.0	3.4	2.5	1.7
	Nm	2.50	1.88	2.0	1.3	0.94	1.13	0.95	0.76	0.57	0.38	0.28	0.19
Accel torque <sup>(1)</sup>	Lb-in	20.7	20.7	20.7	15.0	10.6	20.4	15.8	13.0	9.2	6.7	5.0	2.5
	Nm	2.34	2.34	2.35	1.7	1.2	2.31	1.79	1.46	1.04	0.76	0.57	0.28
<b>OUTPUT</b>													
Rated speed	rpm	1333	1000	800	571	400	250	200	160	114	80	57	57
Rated torque	Lb-in	64	64	80	80	80	144	150	150	158	148	158	150
	Nm	7.2	7.2	9.0	9.0	9.0	16.3	17.0	17.0	17.9	16.7	17.9	17.0
Accel torque <sup>(1)</sup>	Lb-in	159	159	100	100	100	295	286	291	289	295	316	226
	Nm	9.0	9.0	11.3	11.3	11.3	33.3	32.3	32.9	32.7	33.3	35.7	25.5
<b>GENERAL DATA</b>													
Inertia <sup>(2)</sup>	Lb-in-s <sup>2</sup> x10 <sup>-4</sup>	0.56	0.56	0.34	0.11	0.11	0.45	0.45	0.34	0.34	0.11	0.08	0.08
	Kg-m <sup>2</sup> x10 <sup>-5</sup>	0.50	0.50	0.30	0.10	0.10	0.40	0.40	0.30	0.30	0.10	.070	.070
Max. Backlash	arc-mins	15 or 5											
Efficiency <sup>(3)</sup>	%	96					91						
Rated Life	H						10,000						
Weight	Kg / Lbf	3/6.7					4/8.9						
Radial Load <sup>(4)</sup>	N / Lbf	750/169											
Axial Load	N / Lbf	300/67.4											

## MRA 080

No of Stages		1 - Stage					2 - Stages						
Ratio		3	4	5	7	10	16	20	25	35	50	70	100
<b>INPUT</b>													
Rated speed / Max.	rpm	4000 / 6000											
Rated Power	Kw	9.6	9.6	7.4	3.7	2	2.5	2.0	1.6	1.1	0.79	0.54	0.2
Rated torque	Lb-in	204	204	159	80	44	52	42	33	24	17	12	4.4
	Nm	23	23	18	9	5	5.9	4.7	3.7	2.7	1.9	1.3	0.5
Accel torque <sup>(1)</sup>	Lb-in	265	265	177	97	53	80	62	53	35	26	18	9
	Nm	30	30	20	11	6	9	7	6	4	3	2	1
<b>OUTPUT</b>													
Rated speed	rpm	1333	1000	800	571	400	250	200	160	114	80	57	40
Rated torque	Lb-in	752	752	752	575	442	761	752	752	761	752	442	442
	Nm	85	85	85	65	50	86	85	85	86	85	50	50
Accel torque <sup>(1)</sup>	Lb-in	973	973	796	619	487	1106	1115	1150	1186	885	885	619
	Nm	110	110	90	70	55	125	126	130	134	100	100	70
<b>GENERAL DATA</b>													
Inertia <sup>(2)</sup>	Lb-in-s <sup>2</sup> x10 <sup>-4</sup>	12.8	12.8	11.8	10.8	10.5	12.2	12.1	11.3	10.6	12.2	12.2	12.1
	Kg-m <sup>2</sup> x10 <sup>-5</sup>	11.3	11.3	10.4	9.6	9.3	10.8	10.7	10	9.4	10.8	10.8	10.7
Max. Backlash	arc-mins	10 or 5											
Efficiency <sup>(3)</sup>	%	96					91						
Rated Life	H						15,000						
Weight	Kg / Lbf	5/11.2					6/13.4						
Radial Load <sup>(4)</sup>	N / Lbf	1,600/360											
Axial Load	N / Lbf	650/146											

Note: (1) S5 duty service. (2) On the motorside. (3) Theoretical gear efficiency value.

(4) Load applied in the middle of the output shaft at 300 rpm.

(5) Emergency Stop Torque is 2.5 times Rated Output Torque for 1000 times max during the service life of the gearhead.

# Characteristics of Right Angle Gearheads

## MRA 115

No of Stages		1 - Stage					2 - Stages						
Ratio		3	4	5	7	10	16	20	25	35	50	70	100
<b>INPUT</b>													
Rated speed / Max.	rpm	4000 / 6000											
Rated Power	Kw	26	20	16	11	6.3	5	4.2	3.4	2.1	1.5	0.92	0.84
Rated torque	Lb-in	548	416	336	239	133	106	88	71	44	31	19	18
	Nm	62	47	38	27	15	12	10	8	5	3.5	2.2	2
Accel torque <sup>(1)</sup>	Lb-in	761	575	460	257	177	150	115	97	62	46	35	27
	Nm	86	65	52	29	20	17	13	11	7	5.2	4	3
<b>OUTPUT</b>													
Rated speed	rpm	1333	1000	800	571	400	250	200	160	114	80	57	40
Rated torque	Lb-in	1575	1602	1611	1611	1274	1549	1611	1611	1416	1416	1212	1522
	Nm	178	181	182	182	144	175	182	182	160	160	137	172
Accel torque <sup>(1)</sup>	Lb-in	2212	2212	2212	1726	1726	2212	2212	2212	2212	2212	2212	2212
	Nm	250	250	250	195	195	250	250	250	250	250	250	250
<b>GENERAL DATA</b>													
Inertia <sup>(2)</sup>	Lb-in-s <sup>2</sup> x10 <sup>-4</sup>	50.2	50.2	45.6	41.6	39.7	47.8	47.5	44.0	40.7	47.6	47.6	47.3
	Kg-m <sup>2</sup> x10 <sup>-5</sup>	44.4	44.4	40.4	36.8	35.1	42.3	42	38.9	36	42.1	42.1	41.9
Max. Backlash	arc-mins	10 or 5											
Efficiency <sup>(3)</sup>	%	96					91						
Rated Life	H						15,000						
Weight	Kg / Lbf	23/51					25/56						
Radial Load <sup>(4)</sup>	N / Lbf	2,400/540											
Axial Load	N / Lbf	1,000/225											

## MRA 140

No of Stages		1 - Stage					2 - Stages						
Ratio		3	4	5	7	10	16	20	25	35	50	70	100
<b>INPUT</b>													
Rated speed / Max.	rpm	4000 / 6000											
Rated Power	Kw	33	25	20	14	10	6.7	5.5	4.2	3	2.1	1.5	1
Rated torque	Lb-in	708	531	425	301	212	142	115	88	62	44	31	22
	Nm	80	60	48	34	24	16	13	10	7	5	3.5	2.5
Accel torque <sup>(1)</sup>	Lb-in	1221	920	735	389	274	239	195	150	106	71	53	35
	Nm	138	104	83	44	31	27	22	17	12	8	6	4
<b>OUTPUT</b>													
Rated speed	rpm	1333	1000	800	571	400	250	200	160	114	80	57	40
Rated torque	Lb-in	2035	2035	2035	2035	2035	2035	2035	2035	2035	2035	2035	2035
	Nm	230	230	230	230	230	230	230	230	230	230	230	230
Accel torque <sup>(1)</sup>	Lb-in	3540	3540	3540	2655	2655	3540	3540	3540	3540	3540	3540	3540
	Nm	400	400	400	300	300	400	400	400	400	400	400	400
<b>GENERAL DATA</b>													
Inertia <sup>(2)</sup>	Lb-in-s <sup>2</sup> x10 <sup>-4</sup>							132					
	Kg-m <sup>2</sup> x10 <sup>-5</sup>							117					
Max. Backlash	arc-mins	10 or 5											
Efficiency <sup>(3)</sup>	%	96					91						
Rated Life	H						15,000						
Weight	Kg / Lbf	25/56					33/74						
Radial Load <sup>(4)</sup>	N / Lbf	6,000/1350											
Axial Load	N / Lbf	3,000/675											

Note: (1) S5 duty service. (2) On the motorside. (3) Theoretical gear efficiency value.

(4) Load applied in the middle of the output shaft at 300 rpm.

(5) Emergency Stop Torque is 2.5 times Rated Output Torque for 1000 times max during the service life of the gearhead.

# Characteristics of Right Angle Gearheads

## MRA 180

No of Stages		1 - Stage					2 - Stages						
Ratio		3	4	5	7	10	16	20	25	35	50	70	100
<b>INPUT</b>													
Rated speed / Max.	rpm	4000 / 6000											
Rated Power	Kw	51	38	31	22	15	10	8	6.3	4.6	3	2.5	1.7
Rated torque	Lb-in	1071	805	646	460	319	212	168	133	97	71	53	35
	Nm	121	91	73	52	36	24	19	15	11	8	6	4
Accel torque <sup>(1)</sup>	Lb-in	1230	920	735	522	363	239	195	159	115	80	62	44
	Nm	138	104	83	59	41	27	22	18	13	9	7	5
<b>OUTPUT</b>													
Rated speed	rpm	1333	1000	800	571	400	250	200	160	114	80	57	40
Rated torque	Lb-in	3097	3097	3097	3097	3097	3097	3097	3097	3097	3097	3097	3097
	Nm	350	350	350	350	350	350	350	350	350	350	350	350
Accel torque <sup>(1)</sup>	Lb-in	5310	5310	5310	5310	5310	5310	5310	5310	5310	5310	5310	5310
	Nm	600	600	600	600	600	600	600	600	600	600	600	600
<b>GENERAL DATA</b>													
Inertia <sup>(2)</sup>	Lb-in-s <sup>2</sup> x10 <sup>-4</sup>												
	Kg-m <sup>2</sup> x10 <sup>-5</sup>												
Max. Backlash	arc-mins	10 or 5											
Efficiency <sup>(3)</sup>	%	96					91						
Rated Life	H	15,000											
Weight	Kg / Lbf	60/134					90/201						
Radial Load <sup>(4)</sup>	N / Lbf	9,000/2023											
Axial Load	N / Lbf	5,000/1124											

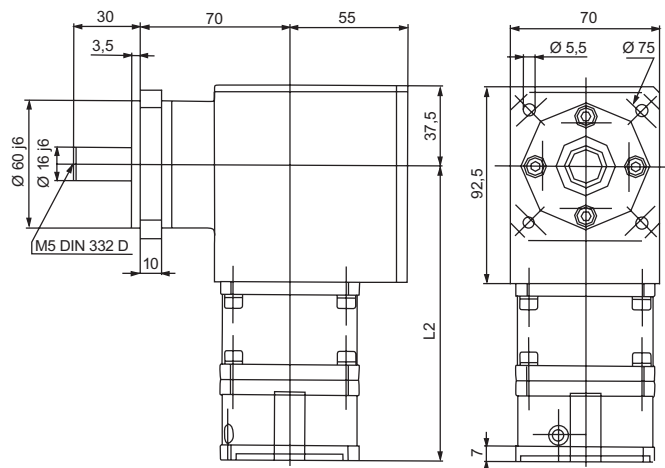
Note: (1) S5 duty service. (2) On the motorside. (3) Theoretical gear efficiency value.

(4) Load applied in the middle of the output shaft at 300 rpm.

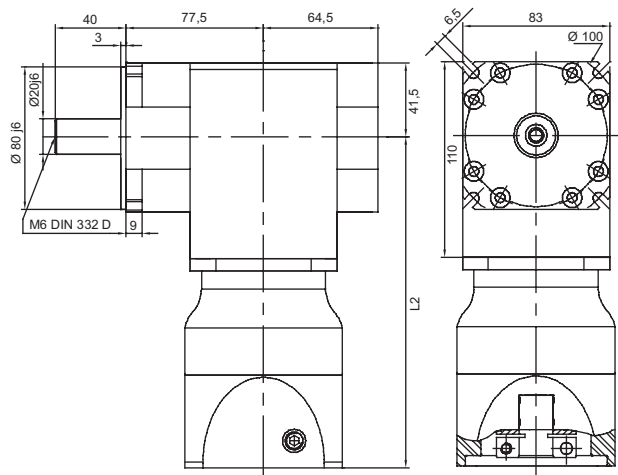
(5) Emergency Stop Torque is 2.5 times Rated Output Torque for 1000 times max during the service life of the gearhead.

## Right Angle Gearhead Dimensions

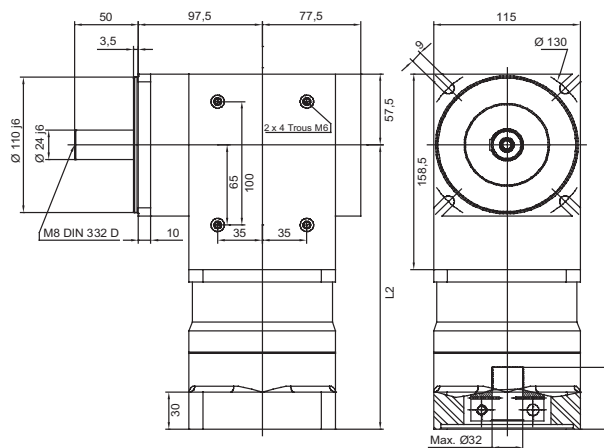
### GBSM63-MRA065-XX



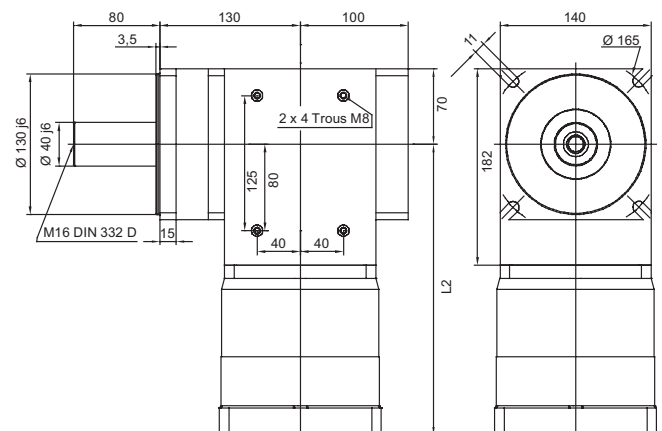
### GBSM80-MRA080-XX



### GBSM90-MRA115-XX



### GBSM100-MRA140-XX



Gear Number	Number of Stages	"L2" Length (mm)
MRA065	1	139
	2	162
MRA080	1	189
	2	204
MRA115	1	231
	2	272
MRA140	1	291
	2	332

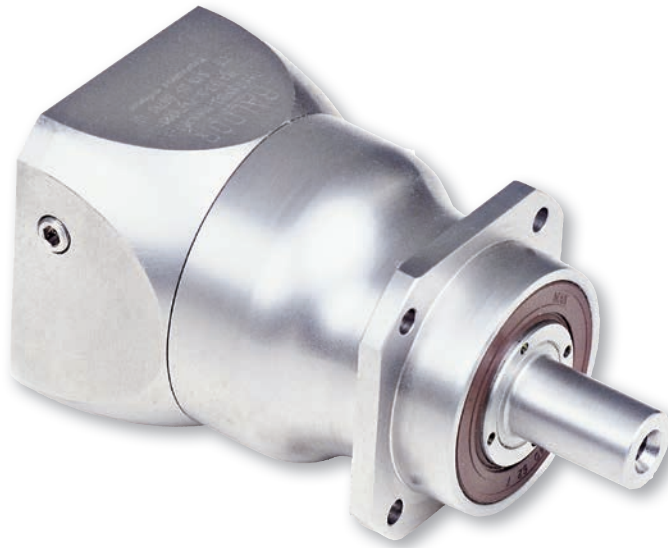
Note: "XX" insert specific gear ratios.

Verify that motor torque does not exceed gear rated input torque.

Other BSM and gearhead possibility exist. Contact Baldor with your requirements. Dimensions in mm.

# Stainless Steel Servo Rated Gear Heads - MSS Series

These highly efficient, all stainless steel, all planetary, servo rated gearheads provide low standard backlash of 6 - 15 arc minute maximum over the life of the gearhead. They are designed to mount directly onto ABB's stainless steel servo motors (SSBSM series).



## Stainless Steel Gearhead

- > Backlash of 6-15 arc min for greater positional accuracy
- > Includes an integrated, self-locating, input coupling to make assembly to the motor quick and easy
- > Square mounting flange for motor and output
- > Lubrication - oil - 15 K hours rated load, speed, & temperature
- > Satellite gears are hardened, double supported in carrier and rotate on needle bearings
- > Output shaft - stainless steel with Viton™ seal
- > Gearhead housing - all stainless steel
- > Easily cleanable design to handle IP66 and 1,500 psi washdown

## Quick Selection Guide for Stainless Steel MSS Servo Gearheads

MOTOR	SELECTION CHART FOR SSBSM C-SERIES AND STAINLESS STEEL GEARHEADS (MSS)												
BSM Series	1 Stage Ratios					2 Stage Ratios							
	3	4	5	7	10	16	20	25	35	40	50	70	100
80C - 1XX	080	080	080	080	080	080	080	080	080	080	080	080	115
80C - 2XX	080	080	080	080	080	080	080	080	080	115	115	115	140
80C - 3XX	080	080	080	080	080	080	080	080	115	115	115	115	*
80C - 4XX	080	080	080	080	080	080	080	115	115	115	115	140	*

Ordering nonmenclature: for Gearhead only

G BSM80 - MSS080 - 10  
 Gear Motor Gearhead type Ratio

MOTOR	SELECTION CHART FOR SSBSM N-SERIES AND STAINLESS STEEL GEARHEADS (MSS)												
SSBSM Series	1 Stage Ratios					2 Stage Ratios							
	3	4	5	7	10	16	20	25	35	40	50	70	100
50N - 1XX	80	80	80	80	80	80	80	80	80	80	80	080	080
50N - 2XX	80	80	80	80	80	80	80	80	80	80	80	080	*
50N - 3XX	80	80	80	80	80	80	80	80	80	80	80	*	*
63N - 1XX	80	80	80	80	80	80	80	80	80	80	80	080	115
63N - 2XX	80	80	80	80	80	80	80	80	80	80	80	115	115
63N - 3XX	80	80	80	80	80	80	80	80	80	80	80	115	*
80N - 1XX	080	080	080	080	080	080	080	080	080	080	080	115	115
80N - 2XX	080	080	080	080	080	080	080	080	115	115	115	115	140
80N - 3XX	080	080	080	080	080	080	080	115	115	115	115	140	*

Ordering nonmenclature: for Gearhead only

G BSM80 - MSS080 - 10  
 Gear Motor Gearhead type Ratio

# Characteristics of Stainless Steel Gearheads

## MSS 080

No of Stages		1 - Stage					2 - Stages							
Ratio		3	4	5	7	10	16	20	25	35	40	50	70	100
<b>INPUT</b>														
Rated speed / Max.	rpm	4000 / 6000												
Rated Power	Kw	12.3	9.2	7.4	4.3	2.2	2.5	1.9	1.6	1.2	0.9	0.8	0.5	0.2
	Lb-in	261	196	157	92	46	52	42	33	24	20	17	12	4.4
Rated torque	Nm	29.5	22.1	17.7	10.4	5.2	5.9	4.7	3.7	2.7	2.3	1.9	1.3	0.5
	Lb-in	336	257	186	133	71	80	62	53	35	31	27	18	9
Accel torque <sup>(1)</sup>	Nm	38	29	21	15	8	9	7	6	4	3.5	3	2	1
	Lb-in	973	973	885	885	708	1106	1115	1150	1186	1115	1115	885	708
<b>OUTPUT</b>														
Rated speed	rpm	1333	1000	800	571	400	250	200	160	114	100	80	57	40
Rated torque	Lb-in	752	752	752	619	442	761	752	752	761	752	752	619	442
	Nm	85	85	85	70	50	86	85	85	86	85	85	70	50
Accel torque <sup>(1)</sup>	Lb-in	973	973	885	885	708	1106	1115	1150	1186	1115	1115	885	708
	Nm	110	110	100	100	80	125	126	130	134	126	126	100	80
<b>GENERAL DATA</b>														
Inertia <sup>(2)</sup>	Lb-in-s <sup>2</sup> x10 <sup>-4</sup>	12.8	12.8	11.8	10.8	10.5	12.2	12.1	11.3	10.6	10.3	12.2	12.2	12.1
	Kg-m <sup>2</sup> x10 <sup>-5</sup>	11.3	11.3	10.4	9.6	9.3	10.8	10.7	10	9.4	9.1	10.8	10.8	10.7
Max. Backlash	arc-mins	10, 5 or 1												
Efficiency <sup>(3)</sup>	%	96					91							
Rated Life	H						15,000							
Weight	Kg / Lbf	3/6.7					4/8.9							
Radial Load <sup>(4)</sup>	N / Lbf	3500/787												
Axial Load	N / Lbf	3000/675												

## MSS 115

No of Stages		1 - Stage					2 - Stages							
Ratio		3	4	5	7	10	16	20	25	35	40	50	70	100
<b>INPUT</b>														
Rated speed / Max.	rpm	4000 / 6000												
Rated Power	Kw	31.4	31.4	22.2	12.6	6.3	8.3	6.7	5	3.8	2.5	2.1	1.7	1.4
	Lb-in	796	619	442	265	133	177	142	106	80	62	53	35	18
Rated torque	Nm	90	70	50	30	15	20	16	12	9	7	6	4	2
	Lb-in	920	717	496	327	186	204	186	150	115	80	71	44	27
Accel torque <sup>(1)</sup>	Nm	104	81	56	37	21	23	21	17	13	9	8	5	3
	Lb-in	2708	2743	2390	2212	1770	3009	3380	3407	3451	2743	2743	2832	2390
<b>OUTPUT</b>														
Rated speed	rpm	1333	1000	800	571	400	250	200	160	114	100	82	57	40
Rated torque	Lb-in	2390	2390	2115	1673	1195	2390	2390	2257	2372	2257	2265	2265	1593
	Nm	270	270	239	189	135	270	270	255	268	255	256	256	180
Accel torque <sup>(1)</sup>	Lb-in	2708	2743	2390	2212	1770	3009	3380	3407	3451	2743	2743	2832	2390
	Nm	306	310	270	250	200	340	382	385	390	310	310	320	270
<b>GENERAL DATA</b>														
Inertia <sup>(2)</sup>	Lb-in-s <sup>2</sup> x10 <sup>-4</sup>	50.2	50.2	45.7	41.6	39.7	47.8	47	44	41	39.2	47.6	47.6	47.3
	Kg-m <sup>2</sup> x10 <sup>-5</sup>	44.4	44.4	40.4	36.8	35.1	42.3	42	38.9	36	34.7	42.1	42.1	41.9
Max. Backlash	arc-mins	10, 5 or 1												
Efficiency <sup>(3)</sup>	%	96					91							
Rated Life	H						15,000							
Weight	Kg / Lbf	7.5/16.5					9/20							
Radial Load <sup>(4)</sup>	N / Lbf	5500/1237												
Axial Load	N / Lbf	5000/1124												

Note: (1) S5 duty service. (2) On the motorside. (3) Theoretical gear efficiency value.  
(4) Load applied in the middle of the output shaft at 300 rpm.  
(5) Emergency Stop Torque is 2.5 times Rated Output Torque for 1000 times max during the service life of the gearhead.



## MSS 140

No of Stages		1 - Stage					2 - Stages							
Ratio		3	4	5	7	10	16	20	25	35	40	50	70	100
<b>INPUT</b>														
Rated speed / Max.	rpm	4000 / 6000												
Rated Power	Kw	41.9	41.9	40.1	22.9	11.3	12.1	12.1	9.6	6.7	4.6	3.4	2.9	2.5
	Lb-in	1106	885	850	487	239	257	257	204	142	106	88	53	27
Rated torque	Nm	125	100	96	55	27	29	29	23	16	12	10	6	3
	Lb-in	1531	1150	920	655	363	301	274	221	150	133	106	71	35
Accel torque <sup>(1)</sup>	Nm	173	130	104	74	41	34	31	25	17	15	12	8	4
	Lb-in	1531	1150	920	655	363	301	274	221	150	133	106	71	35
<b>OUTPUT</b>														
Rated speed	rpm	1333	1000	800	571	400	250	200	160	114	100	82	57	40
Rated torque	Lb-in	3186	3398	3982	3265	2292	3487	4363	4327	4212	3982	3982	3363	2416
	Nm	360	348	450	369	259	394	493	489	476	450	450	380	273
Accel torque <sup>(1)</sup>	Lb-in	4425	4425	4425	4425	3540	4425	4956	4956	4780	5832	4867	4425	3486
	Nm	500	500	500	500	400	500	560	560	540	546	550	500	360
<b>GENERAL DATA</b>														
Inertia <sup>(2)</sup>	Lb-in-s <sup>2</sup> x10 <sup>-4</sup>	107	101	97	87	81	103	103	96	90	85	79	79	79
	Kg-m <sup>2</sup> x10 <sup>-5</sup>	95	89	86	77	72	91	91	85	80	75	70	70	70
Max. Backlash	arc-mins	10, 5 or 1												
Efficiency <sup>(3)</sup>	%	96					91							
Rated Life	H	9/20					15,000							
Weight	Kg / Lbf	9/20					17/38							
Radial Load <sup>(4)</sup>	N / Lbf	9100/2046												
Axial Load	N / Lbf	9100/2046												

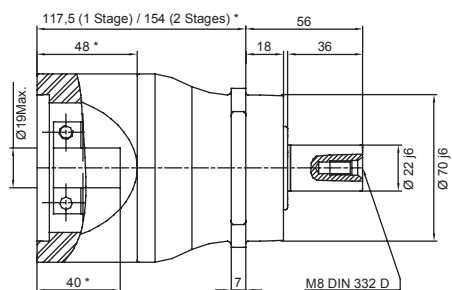
Note: (1) S5 duty service. (2) On the motorside. (3) Theoretical gear efficiency value.

(4) Load applied in the middle of the output shaft at 300 rpm.

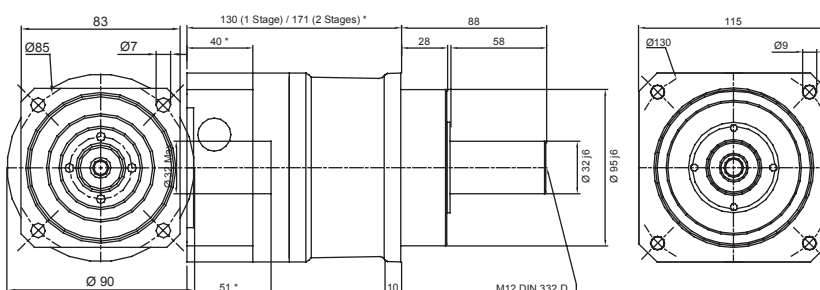
(5) Emergency Stop Torque is 2.5 times Rated Output Torque for 1000 times max during the service life of the gearhead.

## Stainless Steel Gearhead Dimensions

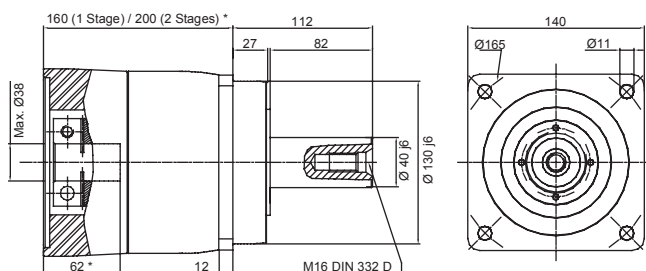
### MSS080



### MSS115



### MSS140



Gear Number	Number of Stages	"L2" Length (mm)
MSS080	1	117.5
	2	154
MSS115	1	130
	2	171
MSS140	1	160
	2	200

Note: "XX" insert specific gear ratios.

Verify that motor torque does not exceed gear rated input torque.

Other BSM and gearhead possibility exist. Contact Baldor with your requirements. Dimensions in mm.

## Servo Motor Gearhead Identification Matrix

**G** **B** **S** **M** -    -       -

Motor

50  
63  
80  
90  
100  
132

Gearbox Model

Motor	Standard	Lower Backlash	Higher Torque Lower Backlash	Stainless	Right Angle Stainless	Rotating Flange (Shaftless design)
50	MRP050	MRA065	MRA065	MSS080	MRS080	BDB085
63	MRP070	MRA080	MRA080	MSS115	MRS115	BDB120
80	MRP090	MRA115	MRA115	MSS140	MRS140	BDB145
90	MRP120	MRA140	MRA140			BDB180
100	MRP155	MRA180	MRA180			BDB250
132						BDB300
						BDB330

Example: G BSM80 - MRP090 - 4

## Servo Motor Gearhead Designed Specifically for BSM Servo



Gearhead Catalog Number	Max. Backlash Arc - Min.	Gear fits these motors		Gear Ratio	List Price	Mult. Sym.
		BSM-N	BSM-C			
GBSM50-MRP050-5	12	BSM50N-1 or -2	—	5	1191	E4
GBSM50-MRP050-10	12	BSM50N-1	—	10	1191	E4
GBSM63-MRP070-5	12	BSM63N-all	—	5	1350	E4
GBSM63-MRP070-10	12	BSM63N-1 or -2	—	10	1350	E4
GBSM63-MRP090-25	12	BSM63N-1 or -2	—	25	2260	E4
GBSM63-MRP090-50	12	BSM63N-1	—	50	2260	E4
GBSM80-MRP090-4	10	BSM80N-all	BSM80C-all	4	1586	E4
GBSM80-MRP090-5	10	BSM80N-all	BSM80C-all	5	1586	E4
GBSM80-MRP090-7	10	BSM80N-all	BSM80C-all	7	1586	E4
GBSM80-MRP090-10	10	BSM80N-1 or -2	BSM80C-1 or -2	10	1586	E4
GBSM80-MRP090-16	12	BSM80N-1 or -2	BSM80C-1 or -2	16	2260	E4
GBSM80-MRP090-25	12	BSM80N-1	BSM80C-1	25	2260	E4
GBSM80-MRP120-50	12	BSM80N-1 or -2	BSM80C-1 or -2	50	2745	E4
GBSM80-MRP155-100	12	BSM80N-1	BSM80C-1	100	3323	E4
GBSM90-MRP120-4	10	BSM90N-all	BSM80C-all	4	2025	E4
GBSM90-MRP120-5	10	BSM90N-all	BSM80C-all	5	2025	E4
GBSM90-MRP120-7	10	BSM90N-all	BSM80C-all	7	2025	E4
GBSM90-MRP120-10	10	BSM90N-1	BSM90C-1 or -2	10	2025	E4
GBSM90-MRP120-25	12	BSM90N-1	BSM90C-1 or -2	25	2745	E4
GBSM90-MRP155-10	10	BSM90N-all	BSM90C-3	10	2551	E4
GBSM90-MRP155-25	12	BSM90N-all	BSM90C-3	25	3323	E4
GBSM100-MRP120-3	10	BSM100N-all	BSM100C-all	3	2025	E4
GBSM100-MRP120-5	10	BSM100N-1 or -2	BSM100C-1-2-3-4	5	2025	E4
GBSM100-MRP155-5	10	BSM100N-3 or -4	BSM100C-5 or -6	5	2551	E4
GBSM100-MRP155-10	10	BSM100N-1	BSM100C-1or-2or-3	10	2551	E4

Shaded areas are stocked products.

## Standard Gearheads

Gearhead Type	Number of Stages	Ratios Available	Backlash Arc-min	Catalog Number	List Price	Mult. Sym.
MRP 050	1	4-5-7-10	12	MRP 050 (4-10)	1191	E4
	2	16-20-25-35-40-50-70-100	15	MRP 050 (16-100)	1692	E4
MRP 070	1	3-4-5-7-10	12	MRP 070 (3-10)	1350	E4
	2	16-20-25-35-40-50-70-100	15	MRP 070 (16-100)	1976	E4
MRP 090	1	3-4-5-7-10	10	MRP 090 (3-10)	1586	E4
	2	16-20-25-35-40-50-70-100	12	MRP 090 (16-100)	2260	E4
MRP 120	1	3-4-5-7-10	10	MRP 120 (3-10)	2025	E4
	2	16-20-25-35-40-50-70-100	12	MRP 120 (16-100)	2745	E4
MRP 155	1	3-4-5-7-10	10	MRP 155 (3-10)	2551	E4
	2	16-20-25-35-40-50-70-100	12	MRP 155 (16-100)	3323	E4

## Higher Torque / Lower Backlash Gearhead

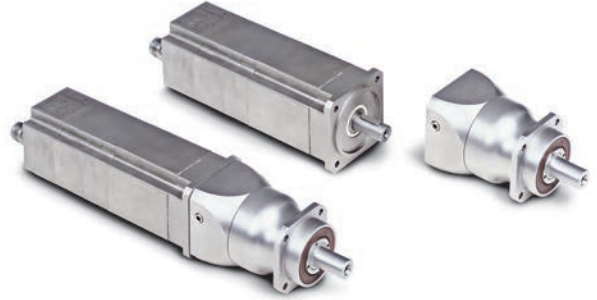
Gearhead Type	Number of Stages	Ratios Available	Standard Arc-Min Backlash	Catalog Number	List Price	Reduced Arc-Min Backlash	Catalog Number	List Price	Mult. Sym.
MNT 065	1	3-4-5-7-10	15	MNT 065 (3-10)	1832	5	MNT 065 (3-10-L)	2198	E4
	2	16-20-25-35-40-50-70-100	15	MNT 065 (16-100)	2752	5	MNT 065 (16-100-L)	3309	E4
MNT 080	1	3-4-5-7-10	10	MNT 080 (3-10)	2591	5	MNT 080 (3-10-L)	2964	E4
	2	16-20-25-35-40-50-70-100	10	MNT 080 (16-100)	3365	5	MNT 080 (16-100-L)	3861	E4
	3	125 & 175	10	MNT 080 (125-175)	4132	5	MNT 080 (125-175-L)	4757	E4
MNT 115	1	3-4-5-7-10	10	MNT 115 (3-10)	3610	5	MNT 115 (3-10-L)	4159	E4
	2	16-20-25-35-40-50-70-100	10	MNT 115 (16-100)	4456	5	MNT 115 (16-100-L)	5103	E4
	3	125 & 175	10	MNT 115 (125-175)	5303	5	MNT 115 (125-175-L)	6048	E4
MNT 140	1	3-4-5-7-10	10	MNT 140 (3-10)	5203	5	MNT 140 (3-10-L)	5951	E4
	2	16-20-25-35-40-50-70-100	10	MNT 140 (16-100)	6420	5	MNT 140 (16-100-L)	7395	E4
	3	125 & 175	10	MNT 140 (125-175)	7644	5	MNT 140 (125-175-L)	8836	E4
MNT 180	1	3-4-5-7-10	6	MNT 180 (3-10)	6945	3	MNT 180 (3-10-L)	7940	E4
	2	16-20-25-35-40-50-70-100	6	MNT 180 (16-100)	8411	3	MNT 180 (16-100-L)	9634	E4
	3	125 & 175	6	MNT 180 (125-175)	C/F	3	MNT 180 (125-175-L)	C/F	E4
MNT 210	1	3-4-5-7-10	6	MNT 210 (3-10)	11737	3	MNT 210 (3-10-L)	13319	E4
	2	16-20-25-35-40-50-70-100	6	MNT 210 (16-100)	14950	3	MNT 210 (16-100-L)	17070	E4
	3	125 & 175	6	MNT 210 (125-175)	C/F	3	MNT 210 (125-175-L)	C/F	E4

## Right Angle Gearheads

Gearhead Type	Number of Stages	Ratios Available	Standard Arc-Min Backlash	Catalog Number	List Price	Reduced Arc-Min Backlash	Catalog Number	List Price	Mult. Sym.
MRA 065	1	3-4-5-7-10	15	MRA 065 (3-10)	3142	5	MRA 065 (3-10-L)	3455	E4
	2	16-20-25-35-50-70-100	15	MRA 065 (16-100)	3839	5	MRA 065 (16-100-L)	4216	E4
MRA 080	1	3-4-5-7-10	10	MRA 080 (3-10)	4145	5	MRA 080 (3-10-L)	4560	E4
	2	16-20-25-35-40-50-70-100	10	MRA 080 (16-100)	4871	5	MRA 080 (16-100-L)	5363	E4
	3	125-175	10	MRA 080 (125-175)	C/F	5	MRA 080 (125-175-L)	C/F	E4
MRA 115	1	3-4-5-7-10	10	MRA 115 (3-10)	5301	5	MRA 115 (3-10-L)	5830	E4
	2	16-20-25-35-40-50-70-100	10	MRA 115 (16-100)	6193	5	MRA 115 (16-100-L)	6816	E4
	3	125-175	10	MRA 115 (125-175)	C/F	5	MRA 115 (125-175-L)	C/F	E4
MRA 140	1	3-4-5-7-10	10	MRA 140 (3-10)	6662	5	MRA 140 (3-10-L)	7066	E4
	2	16-20-25-35-40-50-70-100	10	MRA 140 (16-100)	8040	5	MRA 140 (16-100-L)	8839	E4
MRA 180	1	3-4-5-7-10	10	MRA 180 (3-10)	9897	5	MRA 180 (3-10-L)	11082	E4
	2	16-20-25-35-40-50-70-100	10	MRA 180 (16-100)	11902	5	MRA 180 (16-100-L)	13332	E4

**NOTE: HOW TO ORDER CUSTOM:  
EMAIL SCHEDULING THE ABB SERVO MOTOR MODEL NUMBER, GEARHEAD TYPE, RATIO AND BACKLASH.  
DO NOT ENTER REQ SET.**

## Stainless Steel Gearheads Designed Specifically For SSBSM Servo



Gearhead Catalog Number	Gear fits these motors		Gear Ratio	Max Backlash Arc - min	List Price	Mult. Sym.
	BSM-N	BSM-C				
GBSM80-MSS080-5	BSM80N-all	BSM80C-all	5	10	3885	E4
GBSM80-MSS080-7	BSM80N-all	BSM80C-all	7	10	3885	E4
GBSM80-MSS080-10	BSM80N-all	BSM80C-all	10	10	3885	E4
GBSM80-MSS080-16	BSM80N-all	BSM80C-all	16	10	5046	E4

Shaded areas are stocked products.

### Higher Torque / Lower Backlash Gearheads

Gearhead Type	Number of Stages	Ratios Available	Standard Arc-min Backlash	List Price	Mult. Sym.
MSS 080	1	3-4-5-7-10	10	3885	E4
	2	16-20-25-35-40-50-70-100	10	5046	E4
	3	125-175 & UP	10	C/F	E4
MSS 115	1	3-4-5-7-10	10	5415	E4
	2	16-20-25-35-40-50-70-100	10	6685	E4
	3	125-175 & UP	10	C/F	E4
MSS 140	1	3-4-5-7-10	10	7804	E4
	2	16-20-25-35-40-50-70-100	10	9629	E4
	3	125-175 & UP	10	C/F	E4

### Right Angle Gearheads

	Number of Stages	Ratios Available	Standard Arc-min Backlash	List Price	Reduced Arc-min Backlash	List Price	Mult. Sym.
MRS 080	1	3-4-5-7-10	10	6631	5	7297	E4
	2	16-20-25-35-40-50-100	10	7794	5	8578	E4
MRS 115	1	3-4-5-7-10	10	8478	5	9327	E4
	2	16-20-25-35-40-50-100	10	9908	5	10902	E4
MRS 140	1	3-4-5-7-10	10	10657	5	11725	E4
	2	16-20-25-35-40-50-100	10	12860	5	14178	E4

**NOTE: HOW TO ORDER CUSTOM:**  
EMAIL SCHEDULING THE ABB SERVO MOTOR MODEL NUMBER, GEARHEAD TYPE, RATIO AND BACKLASH.  
**DO NOT ENTER REQ SET.**

# Motor Solutions

For over 20 years, ABB has been manufacturing and supplying high reliability servo motor solutions to worldwide applications. Our servo motors are designed for industrial applications, superior durability and proven reliability. Our range of rotary motors are available as a high performance, low inertia family, or as a higher inertia family for applications needing higher inertial matching. We also offer stainless steel motors that lead the way in solutions for harsh and washdown environments.



## Brushless AC Servo Motors

**Refer to catalog IBR1202-E for full information.**

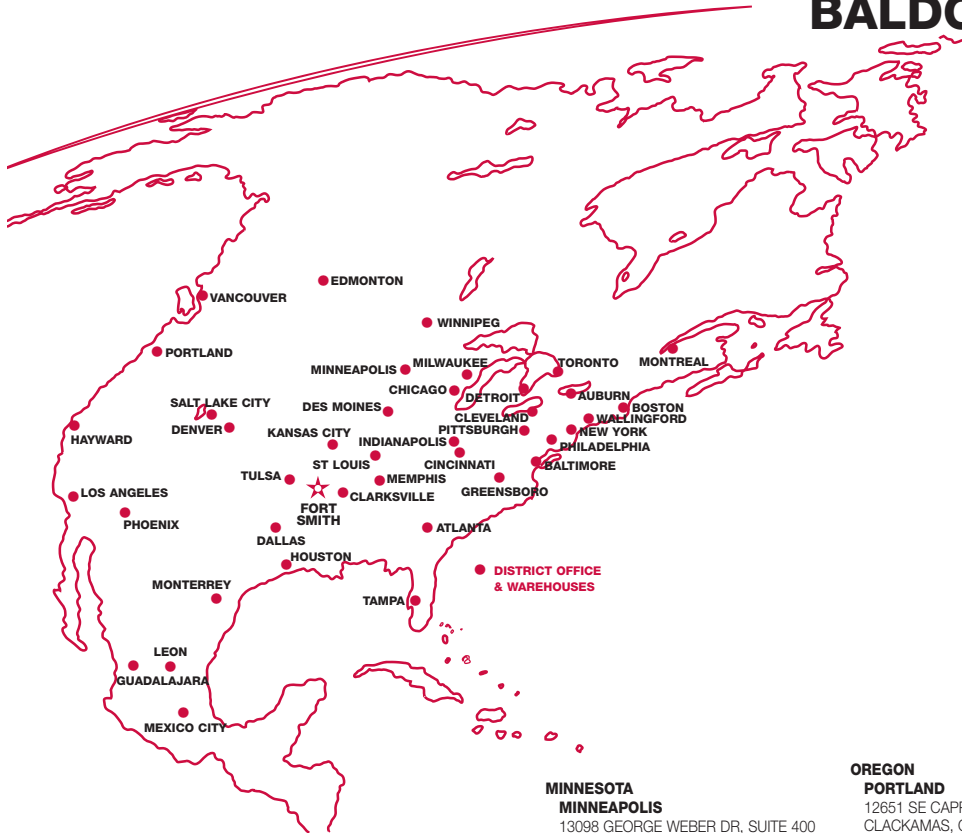
BSM motors are hard at work, increasing productivity, improving part quality, providing precision, and reducing costs in many applications. These motors are available in two models, the BSM N-Series and the BSM C-Series. The N-Series motors provide low inertia for the highest performance. The C-Series motors have a higher inertia. All the motors are available with different feedback options including resolver, incremental, and absolute encoders. Motors are available from 0.4 Nm (4 lb.-in) through to 134 Nm (1185 lb.-in).

Both motor families are available in a stainless steel configuration, offering the best protection for harsh environment. These motors are ideally suited for pharmaceutical and food applications.

## Notes

## Notes

# BALDOR SALES OFFICES



## UNITED STATES

### ARIZONA

**PHOENIX**  
4211 S 43RD PLACE  
PHOENIX, AZ 85040  
PHONE: 602-470-0407  
FAX: 602-470-0464

### ARKANSAS

**CLARKSVILLE**  
706 WEST MAIN STREET  
CLARKSVILLE, AR 72830  
PHONE: 479-754-9108  
FAX: 479-754-9205

### CALIFORNIA

**LOS ANGELES**  
6480 FLOTILLA STREET  
COMMERCE, CA 90040  
PHONE: 323-724-6771  
FAX: 323-721-5859

### HAYWARD

21056 FORBES STREET  
HAYWARD, CA 94545  
PHONE: 510-785-9900  
FAX: 510-785-9910

### COLORADO

**DENVER**  
3855 FOREST STREET  
DENVER, CO 80207  
PHONE: 303-623-0127  
FAX: 303-595-3772

### CONNECTICUT

**WALLINGFORD**  
65 SOUTH TURNPIKE ROAD  
WALLINGFORD, CT 06492  
PHONE: 203-269-1354  
FAX: 203-269-5485

### FLORIDA

**TAMPA/PUERTO RICO/  
VIRGIN ISLANDS**  
3906 EAST 11TH AVENUE  
TAMPA, FL 33605  
PHONE: 813-248-5078  
FAX: 813-241-9514

### GEORGIA

**ATLANTA**  
62 TECHNOLOGY DRIVE  
ALPHARETTA, GA 30005  
PHONE: 770-772-7000  
FAX: 770-772-7200

### ILLINOIS

**CHICAGO**  
340 REMINGTON BLVD.  
BOLINGBROOK, IL 60440  
PHONE: 630-296-1400  
FAX: 630-226-9420

### INDIANA

**INDIANAPOLIS**  
5525 W. MINNESOTA STREET  
INDIANAPOLIS, IN 46241  
PHONE: 317-246-5100  
FAX: 317-246-5110

### IOWA

**DES MOINES**  
1943 HULL AVENUE  
DES MOINES, IA 50313  
PHONE: 515-263-6929  
FAX: 515-263-6515

### MARYLAND

**BALTIMORE**  
7071A DORSEY RUN RD  
ELK RIDGE, MD 21075  
PHONE: 410-579-2135  
FAX: 410-579-2677

### MASSACHUSETTS

**BOSTON**  
6 PULLMAN STREET  
WORCESTER, MA 01606  
PHONE: 508-854-0708  
FAX: 508-854-0291

### MICHIGAN

**DETROIT**  
5993 PROGRESS DRIVE  
STERLING HEIGHTS, MI 48312  
PHONE: 586-978-9800  
FAX: 586-978-9969

### MINNESOTA

**MINNEAPOLIS**  
13098 GEORGE WEBER DR, SUITE 400  
ROGERS, MN 55374  
PHONE: 763-428-3633  
FAX: 763-428-4551

### MISSOURI

**ST LOUIS**  
13678 LAKEFRONT DRIVE  
EARTH CITY, MO 63045  
PHONE: 314-373-3032  
FAX: 314-373-3038

### KANSAS CITY

9810 INDUSTRIAL BLVD.  
LENEXA, KS 66215  
PHONE: 816-587-0272  
FAX: 816-587-3735

### NEW YORK

**AUBURN**  
ONE ELLIS DRIVE  
AUBURN, NY 13021  
PHONE: 315-255-3403  
FAX: 315-253-9923

### NORTH CAROLINA

**GREENSBORO**  
1220 ROTHERWOOD ROAD  
GREENSBORO, NC 27406  
PHONE: 336-272-6104  
FAX: 336-273-6628

### OHIO

**CINCINNATI**  
2929 CRESCENTVILLE ROAD  
WEST CHESTER, OH 45069  
PHONE: 513-771-2600  
FAX: 513-772-2219

### CLEVELAND

**BOSTON**  
8929 FREEWAY DRIVE  
MACEDONIA, OH 44056  
PHONE: 330-468-4777  
FAX: 330-468-4778

### OKLAHOMA

**TULSA**  
5555 E. 71ST ST., SUITE 9100  
TULSA, OK 74136  
PHONE: 918-366-9320  
FAX: 918-366-9338

### OREGON

**PORTLAND**  
12651 SE CAPPS ROAD  
CLACKAMAS, OR 97015  
PHONE: 503-691-9010  
FAX: 503-691-9012

### PENNSYLVANIA

**PHILADELPHIA**  
103 CENTRAL AVENUE, SUITE 400B  
MOUNT LAUREL, NJ 08054  
PHONE: 856-840-8011  
FAX: 856-840-0811

### PITTSBURGH

159 PROMINENCE DRIVE  
NEW KENSINGTON, PA 15068  
PHONE: 724-889-0092  
FAX: 724-889-0094

### TENNESSEE

**MEMPHIS**  
4000 WINCHESTER ROAD  
MEMPHIS, TN 38118  
PHONE: 901-365-2020  
FAX: 901-365-3914

### TEXAS

**DALLAS**  
2920 114TH STREET SUITE 100  
GRAND PRAIRIE, TX 75050  
PHONE: 214-634-7271  
FAX: 214-634-8874

### HOUSTON

10355 W. LITTLE YORK ROAD  
SUITE 300  
HOUSTON, TX 77041  
PHONE: 281-977-6500  
FAX: 281-977-6510

### UTAH

**SALT LAKE CITY**  
2230 SOUTH MAIN STREET  
SALT LAKE CITY, UT 84115  
PHONE: 801-832-0127  
FAX: 801-832-8911

### WISCONSIN

**MILWAUKEE**  
1960 SOUTH CALHOUN ROAD  
NEW BERLIN, WI 53151  
PHONE: 262-784-5940  
FAX: 262-784-1215

## INTERNATIONAL SALES

**FORT SMITH, AR**  
P.O. BOX 2400  
FORT SMITH, AR 72902  
PHONE: 479-646-4711  
FAX: 479-648-5895

## CANADA

**EDMONTON, ALBERTA**  
4053-92 STREET  
EDMONTON, ALBERTA T6E 6R8  
FAX: 780-438-2600

## TORONTO

**OAKVILLE, ONTARIO**  
2910 BRIGHTON ROAD  
OAKVILLE, ONTARIO, CANADA L6H 5S3  
PHONE: 905-829-3301  
FAX: 905-829-3302

## MONTREAL, QUEBEC

5155 J-ARMAND BOMBARDIER  
SAINT-HUBERT, QUÉBEC  
CANADA J3Z 1G4  
PHONE: 514-933-2711  
FAX: 514-933-8639

## VANCOUVER,

**BRITISH COLUMBIA**  
1538 KEBET WAY  
PORT COQUILAM,  
BRITISH COLUMBIA V3C 5M5  
PHONE 604-421-2822  
FAX: 604-421-3113

## WINNIPEG, MANITOBA

54 PRINCESS STREET  
WINNIPEG, MANITOBA R3B 1K2  
PHONE: 204-942-5205  
FAX: 204-956-4251

## MEXICO

**LEON, GUANAJUATO**  
KM. 2.0 BLVD. AEROPUERTO  
LEON, GUANAJUATO, CP37545  
MEXICO  
PHONE: +52 477 761 2030  
FAX: +52 477 761 2010

# BALDOR

A MEMBER OF THE ABB GROUP

Baldor Electric Company • P.O. Box 2400 • Fort Smith, AR 72902-2400 U.S.A.

Ph: (479) 646-4711 • Fax (479) 648-5792 • International Fax (479) 648-5895 • www.baldor.com